



Hornbeam Square, E3

£553 Per week

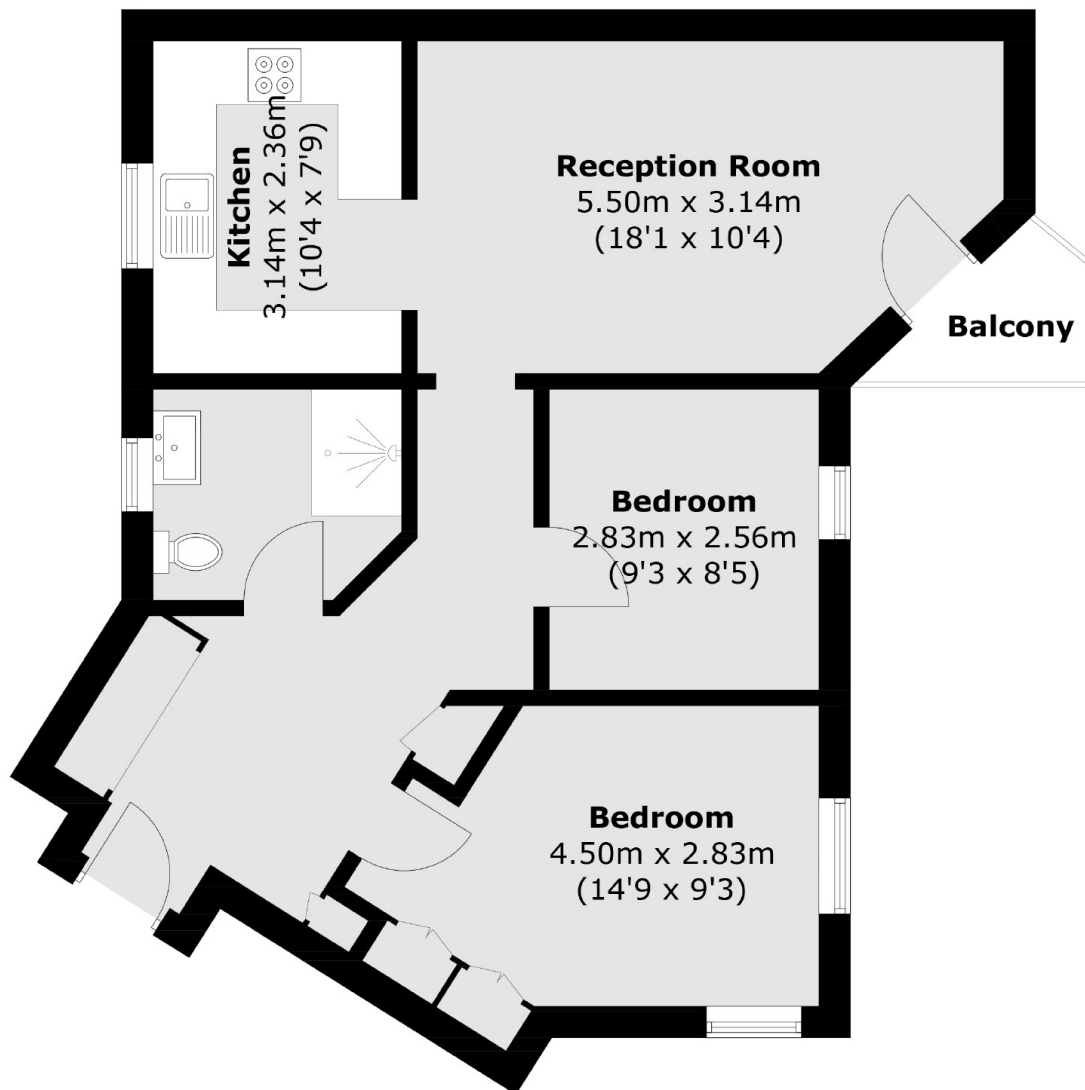
A stylish and contemporary two double bedroom apartment in Rowan House. This emaciate property has a large reception with a balcony overlooking the canal, separate kitchen and a private off street parking space.

Amazing location close to Victoria Park and Mile End for all local shops bar and restaurants.

Features

- Two Double Bedroom
- Wooden Flooring
- Part-Furnished
- Balcony
- Canal Views
- Allocated Parking

Hornbeam Square, London, E3



Total area (approx.): 61.5 sq. m (662.0 sq. ft)
Balcony : 2.0 sq. m (21.5 sq. ft)

Dexters

Hackney
10 Broadway Market
London
E8 4QJ
Lettings
0207 247 2441

Energy Rating: C. We aim to make our particulars both accurate and reliable. However they are not guaranteed; nor do they form part of an offer or contract. If you require clarification on any points then please contact us, especially if you're traveling some distance to view. Please note that appliances and heating systems have not been tested and therefore no warranties can be given as to their good working order.

 **RICS** | Regulated
Estate Agent
and Letting Agent

[dexters.co.uk](https://www.dexters.co.uk)