



Brenthouse Road, E9

£1,300,000

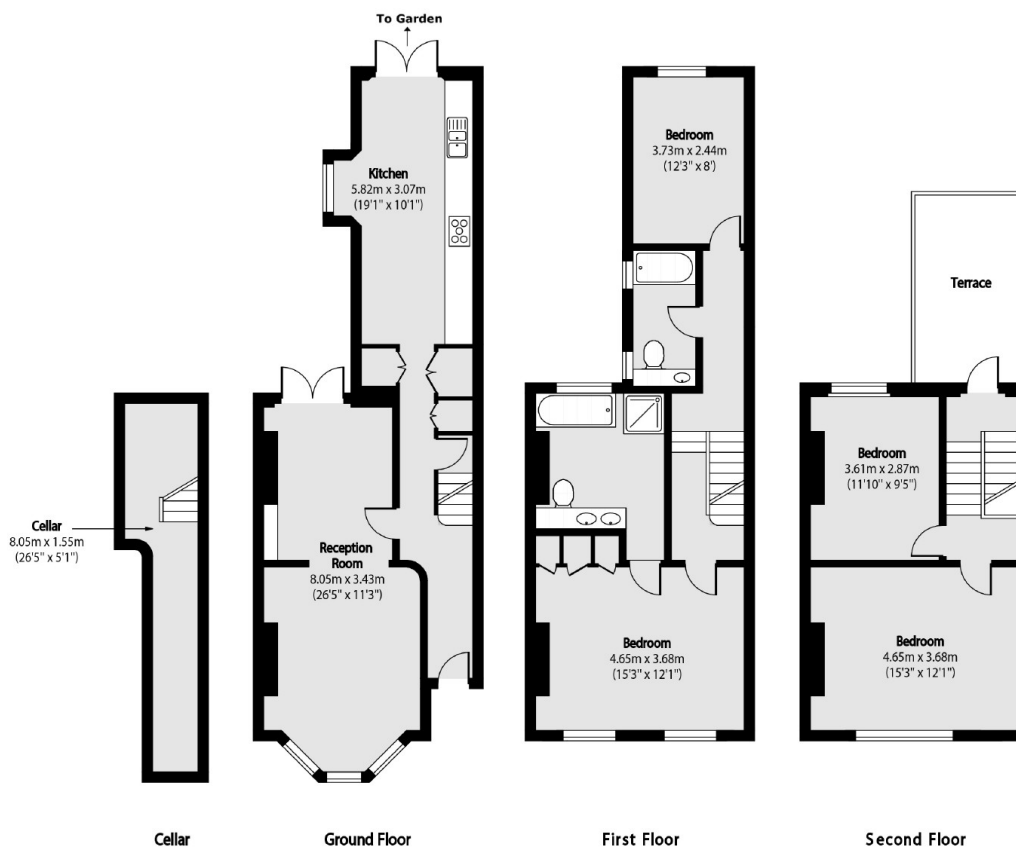
A four double bedroom Victorian terrace house with both a courtyard garden and private decked terrace. The property which measures in excess of 1,560 sqft has been well maintained by the current owners. The ground floor has ample living space, with a double reception room and kitchen which opens onto the courtyard garden. On the first floor there is a large main bedroom with generous ensuite as well as a family bathroom and double bedroom with a further two generous doubles located on the top floor.

Brenthouse Road is located off Mare Street, with the abundance of shops, restaurants, and amenities of Hackney Central and Broadway Market all under a quarter of a mile walk away. The nearest station is London Fields on the Overground, and the area also benefits from being within the catchment areas of both Gayhurst Primary School and London Fields Primary School.

Features

Period property
Freehold House
Four Double Bedrooms
London Fields
Hackney Central
Terrace and Garden

Brenthouse Road, London, E9



Total area (approx): 145.39 sq m (1565 sq. ft)

Terrace total area (approx): 10.03 sq m (108 sq. ft)

Dexters

Hackney
10 Broadway Market
London
E8 4QJ
Sales
0207 247 2440

Energy Rating: D. We aim to make our particulars both accurate and reliable. However they are not guaranteed; nor do they form part of an offer or contract. If you require clarification on any points then please contact us, especially if you're traveling some distance to view. Please note that appliances and heating systems have not been tested and therefore no warranties can be given as to their good working order.

 **RICS** | Regulated
Estate Agent
and Letting Agent

[dexters.co.uk](https://www.dexters.co.uk)