



Terrace Road, E9
£1,250,000

Dexters



Terrace Road, E9

A three double bedroom end of terrace Victorian house. This property has two gardens, is laid out over two floors and measures in excess of 1345 square feet. This property is being offered chain free.

As you enter at ground level there is a dual aspect living area with bay window, feature fireplace and dedicated space for dining. This leads through to the large contemporary kitchen with access to well manicured gardens.

On the first floor there is three double bedrooms and two bathrooms. The bedroom to the rear has an en-suite and there is a centralised bathroom in the hallway. The principle bedroom has a bay window allowing for extra space and light.

The house hosts an abundance of features throughout, including sash windows, engineered wooden flooring, peninsular Island Kitchen and decorative cornicing.

Located just off Well street, this property has plethora of delis, eateries and cafés with 50 yards. The epicentre of victoria park village is under half a mile walk with Well street common and Victoria Park half a mile walk.

Features

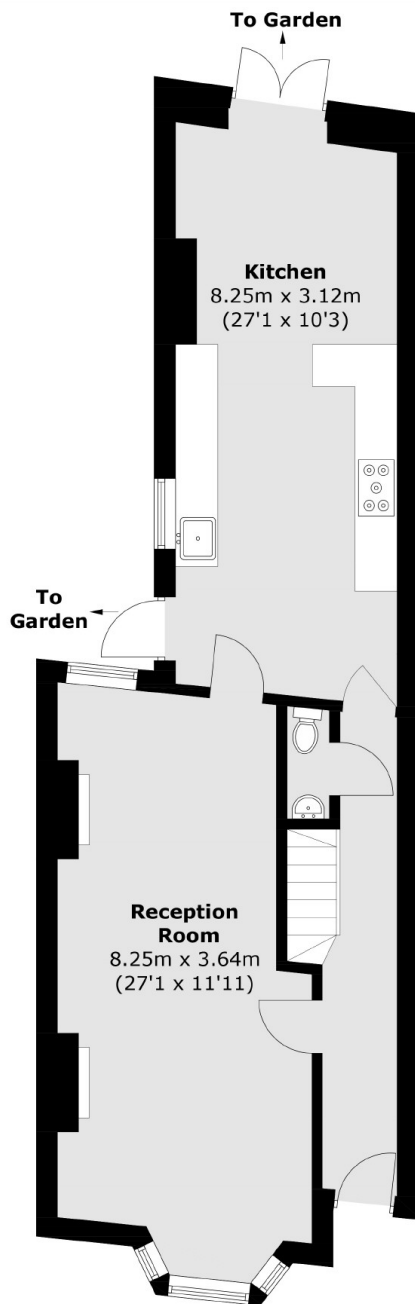
- Three Double Bedrooms
- Two Gardens
- Dual Aspect
- Two Bathrooms
- Period Features
- Chain Free



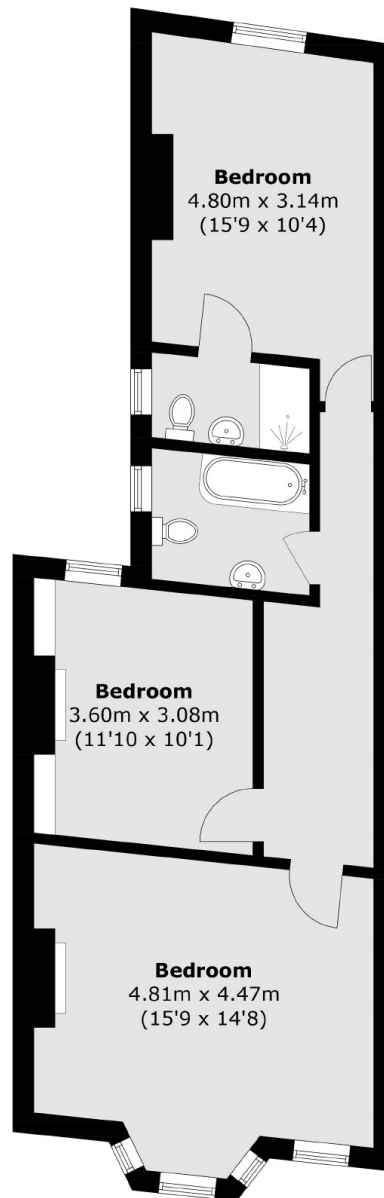




Terrace Road, London, E9



Ground Floor



First Floor

Total area (approx.): 125.0 sq. m (1,345.5 sq. ft)

Dexters

Hackney
10 Broadway Market
London
E8 4QJ
Sales
0207 247 2440

Energy Rating: D. We aim to make our particulars both accurate and reliable. However they are not guaranteed; nor do they form part of an offer or contract. If you require clarification on any points then please contact us, especially if you're traveling some distance to view. Please note that appliances and heating systems have not been tested and therefore no warranties can be given as to their good working order.

 **RICS** | Regulated
Estate Agent
and Letting Agent

[dexters.co.uk](https://www.dexters.co.uk)