

Homerton Road, E9

£461 Per week

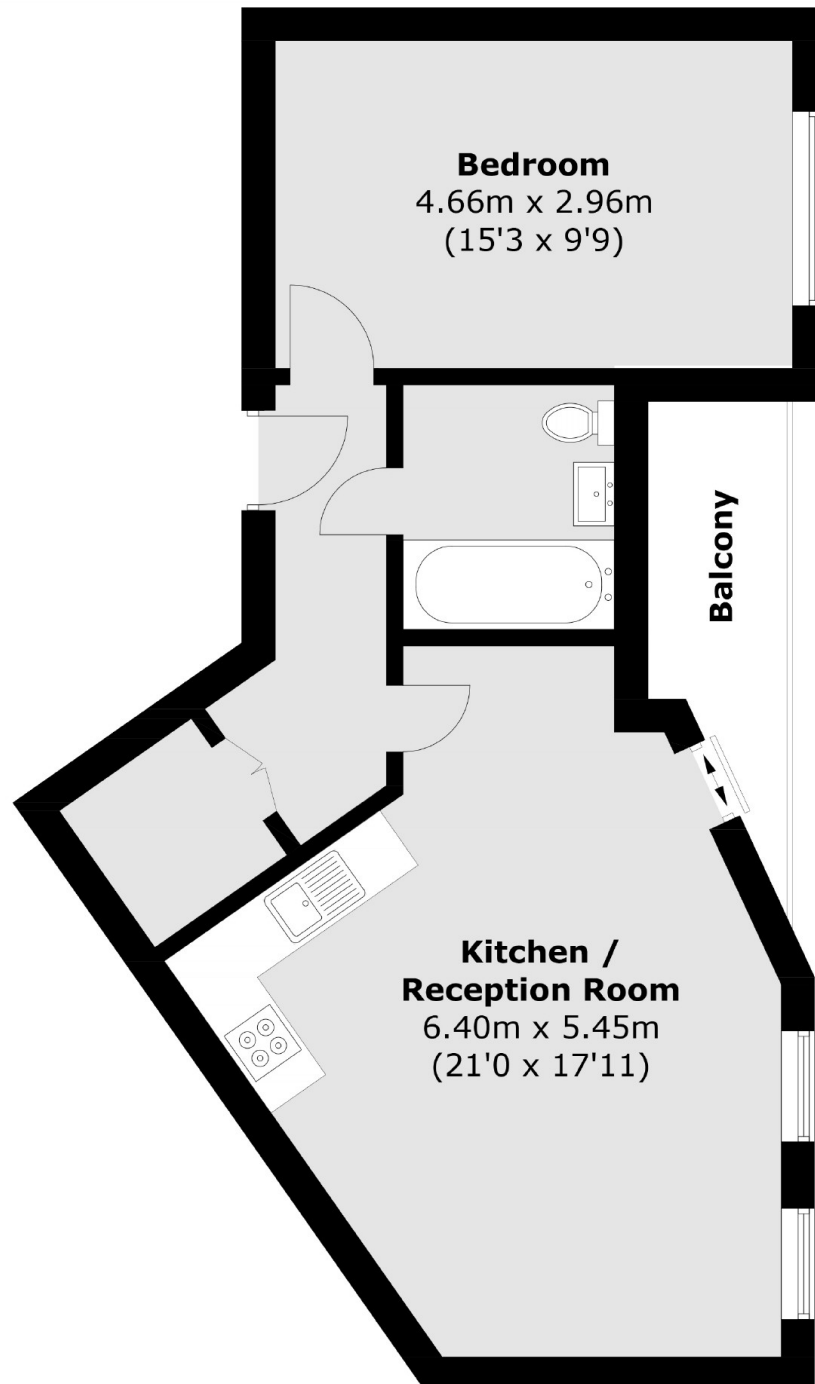
A beautifully presented eighth floor apartment in Matchmakers Wharf. This property has a large double bedroom, an open plan reception, a south facing balcony, 24 hour concierge, resident's gym and underfloor heating.

Located on the River Lee Navigation and overlooking Hackney Marshes, within easy reach of Hackney Wick for local bars and restaurants.

Features

- Eighth Floor Apartment
- 24hr Concierge
- South Facing Balcony
- Canal Views
- Residents Gym
- Underfloor Heating

Homerton Road,
London, E9



Total area (approx.): 50.7 sq. m (545.7 sq. ft)
Balcony area (approx.): 4.2 sq. m (45.2 sq. ft)