



Chatham Place, E9

£510,000

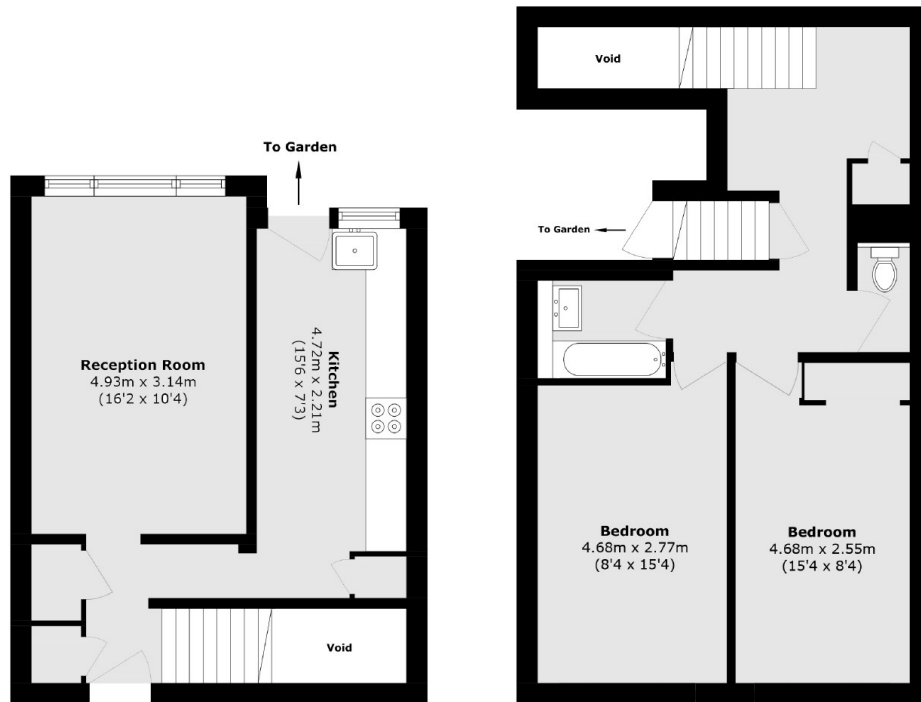
This two-bedroom duplex apartment measuring in excess of 850 sqft has recently been refurbished to a high standard by the current owners. The ground floor has a large separate kitchen, with direct access to the west facing terrace, as well as a lounge space and ample storage. Upstairs there are two generous sized bedrooms, an office nook, bathroom and a separate W/C.

The apartment is ideally located within walking distance of Hackney Central, Hackney Downs and Homerton Stations and is situated nearby green spaces such as London Fields and Victoria Park. The surrounding area also consists of endless bars, eateries, supermarkets and schools.

Features

- Fully refurbished
- Two Double Bedrooms
- Private West-Facing Terrace
- Hackney Central
- Duplex
- Ample Storage

Chatham Place, London, E9



Ground Floor

First Floor

Total area (approx.): 79.7 sq. m (857.8 sq. ft)
(Excluding Void)

Dexters

Hackney
10 Broadway Market
London
E8 4QJ
Sales
0207 247 2440

Energy Rating: D. We aim to make our particulars both accurate and reliable. However they are not guaranteed; nor do they form part of an offer or contract. If you require clarification on any points then please contact us, especially if you're traveling some distance to view. Please note that appliances and heating systems have not been tested and therefore no warranties can be given as to their good working order.

 **RICS** | Regulated
Estate Agent
and Letting Agent

[dexters.co.uk](https://www.dexters.co.uk)