



Grove Green Road, E11

£519 Per week

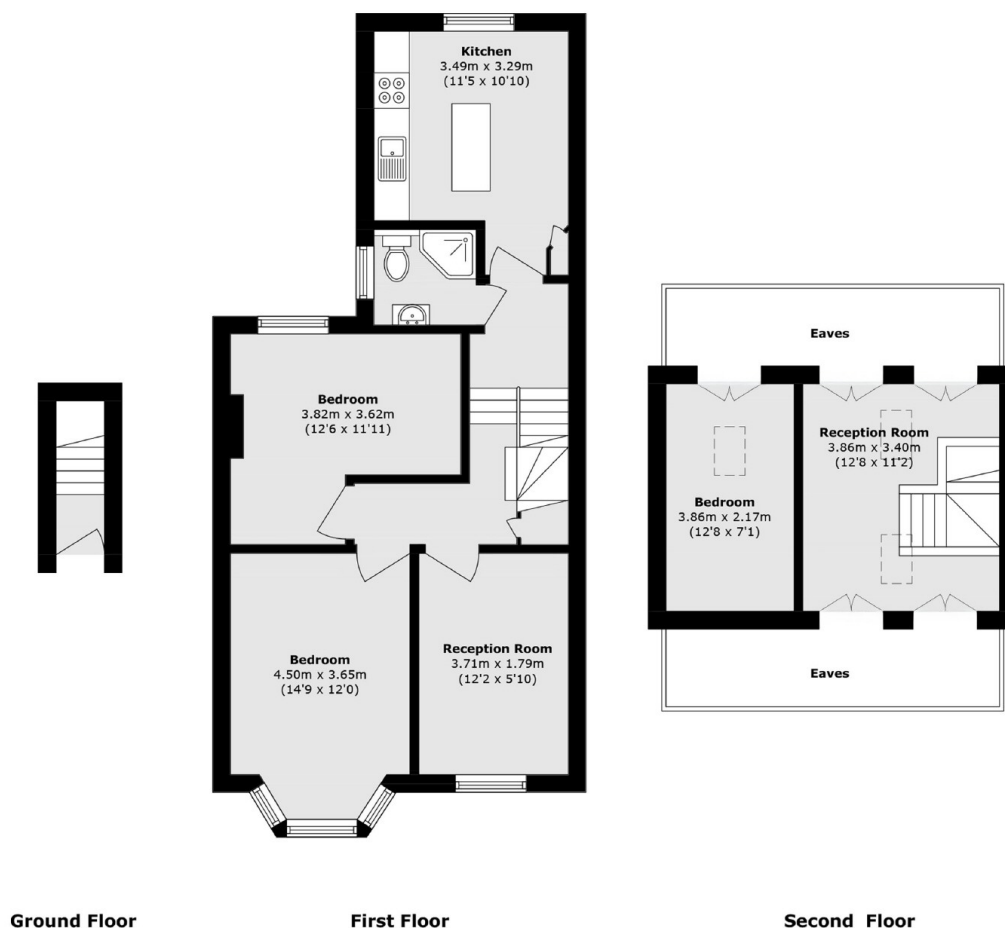
Located on the sought-after Grove Green Road in Leytonstone, this spacious top floor three bedroom apartment offers bright interiors, generous proportions, and excellent transport links.

A short walk from Leytonstone Underground Station (Central Line) and Leyton Midland Road Overground, the property offers fast access to Stratford, the City, and central London.

Features

- Recently Refurbished
- Loft Conversion
- Bay Windows
- Kitchen Island
- Separate Kitchen
- Natural Light

Grove Green Road, London, E11



Total area (approx.): 84.8 sq. m (912.8 sq. ft)
(Excluding Eaves)