



Middleton Road, E8

£1,384 Per week

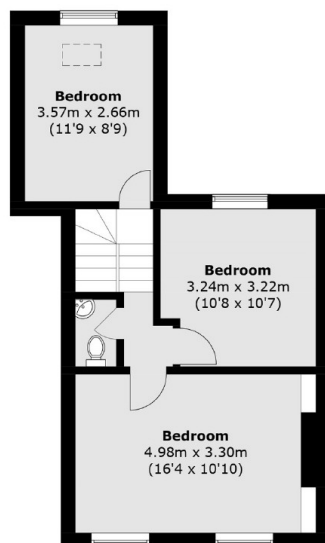
A stunning four bedroom period detached terrace house on Middleton Road moments from London Fields. This property boasts from high ceilings, large Sach windows, original wooden flooring throughout which is arranged over three floors with a large private garden.

London Fields Overground or Dalston Junction are both 0.5 miles away and in both directions there is an abundance of bars, restaurants and shops as well as the East London Line from Dalston providing excellent transport links to the City.

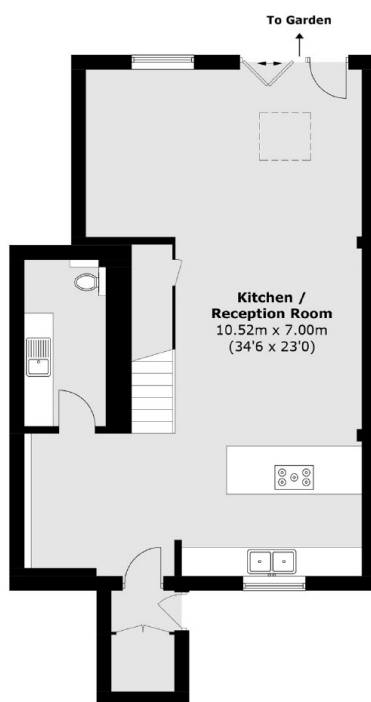
Features

- Four Double Bedrooms
- Two Bathrooms
- Period House
- High Ceilings
- Private Garden
- Bi Folding Doors

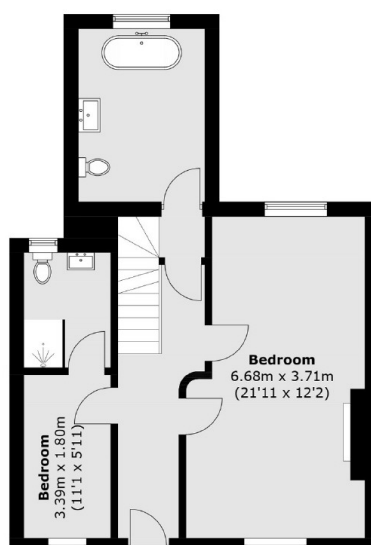
Middleton Road, London, E8



First Floor



Lower Ground Floor



Ground Floor

Total area (approx.): 172.4 sq. m (1,855.7 sq. ft)