



Warneford Street, E9

£825,000

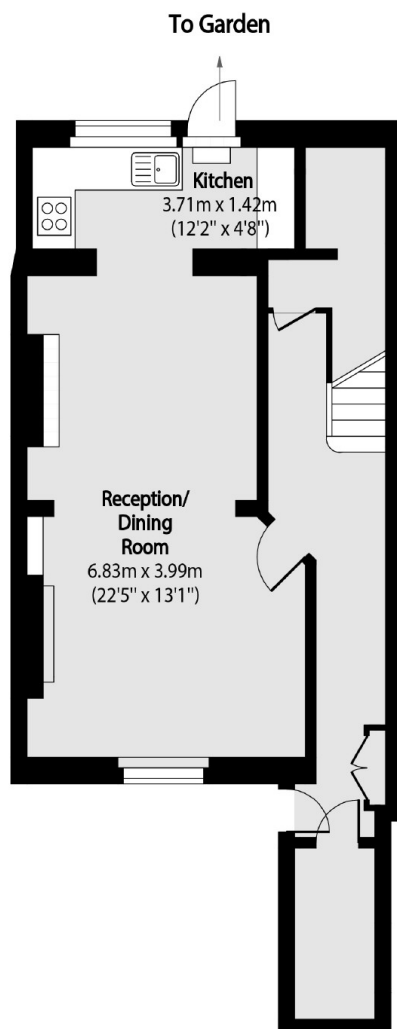
A well presented two double bedroom maisonette with a private garden. This Victorian conversion benefits from high ceilings, open plan living space and wooden flooring. It measures in excess of 870 square foot, has an abundance of storage and has maintained many of it's period features. The current owners are currently in the process of buying a Share of Freehold.

This property is located down a one way street with picturesque Victorian properties. London Fields and Broadway Market are under half a mile away with an abundance of shops, restaurants and bars.

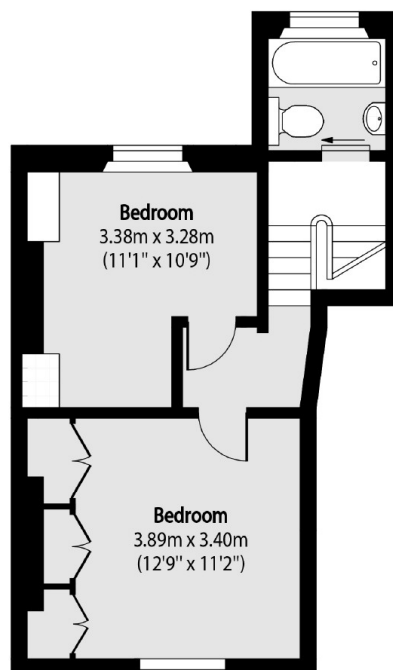
Features

- Period Conversion
- Private Garden
- Duplex
- London Fields
- Victoria Park
- Open Plan Living

Warneford Street, London, E9



Lower Ground Floor



Raised Ground Floor

Total area (approx): 80.91sq m (871 sq. ft)