



Schoolbell Mews, E3
£895,000

Dexters



Schoolbell Mews, E3

A bright open plan, two double bedroom penthouse apartment on the top floor of this impressive Victorian school conversion. The property is well presented by the current owners and retains many original features including original wooden floors, while expansive windows offer picturesque views of the London skyline.

This property also benefits from off street parking, separate bike store and ample storage space from eaves and a loft, plus a balcony accessed just a few steps up from the living room.

Hidden within the Medway conservation area, based on the south side of Victoria Park with local shops and restaurants close by, this property also benefits from being walking distance to the Regents Canal and the Olympic Park, Stratford, with well-connected Mile End tube station just a short 10-minute walk away.

Features

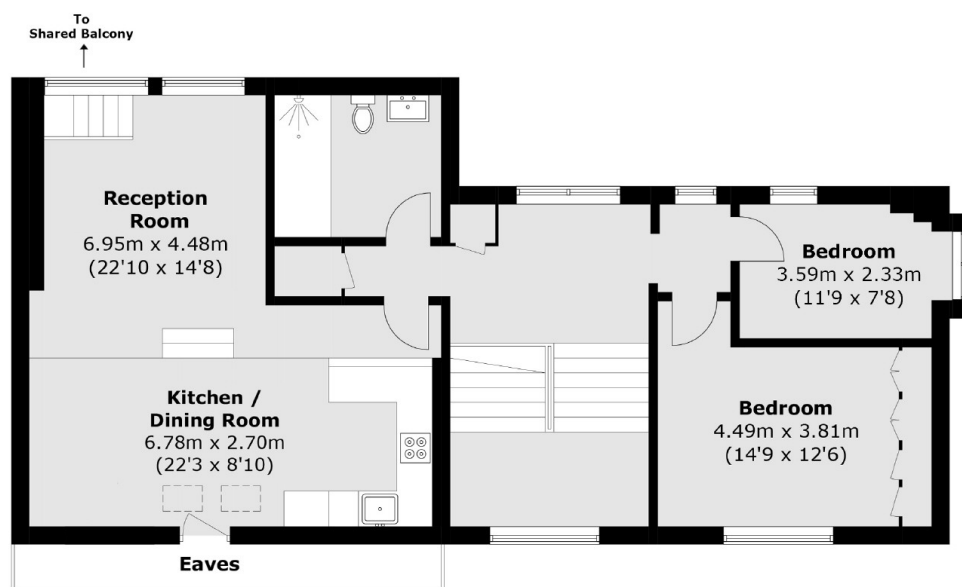
- School Conversion
- Off Street Parking
- Open Plan Living/Kitchen
- Balcony Terrace
- Victoria Park
- Regents & Hertford Union



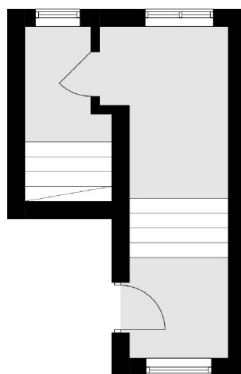




Schoolbell Mews, London, E3



Fourth Floor



Third Floor

Total area (approx.): 111.0 sq. m (1,194.7 sq. ft)
(Excluding Eaves)