

Gibbs Lane, E2

£634 Per week

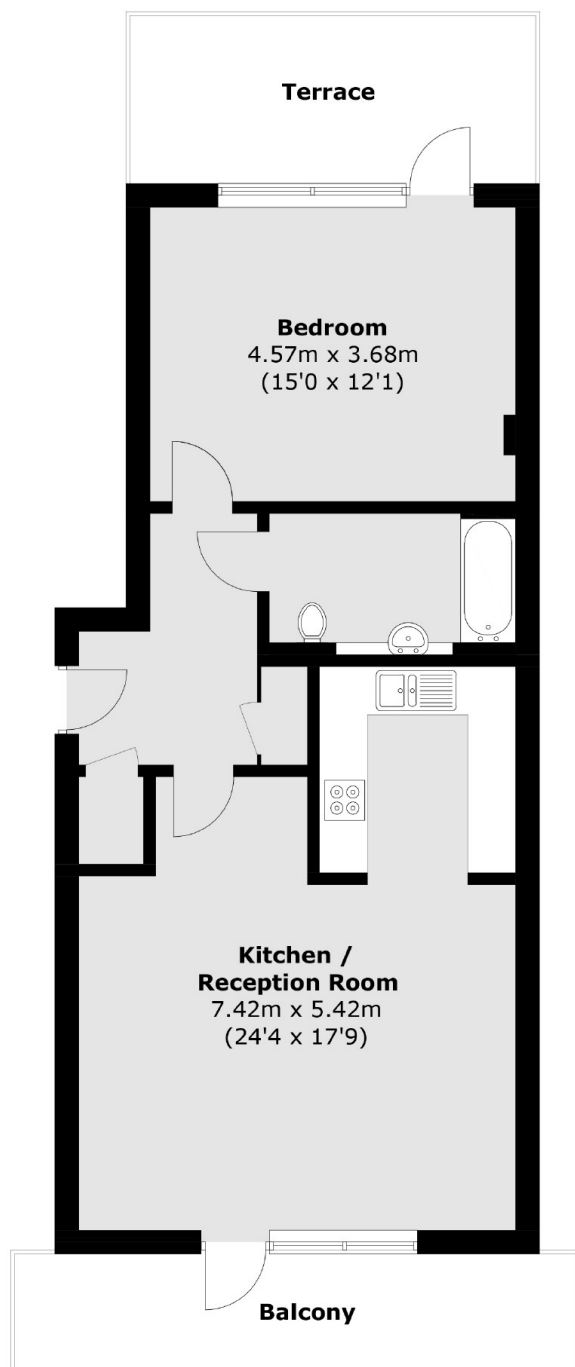
A stunning one double bedroom apartment with two large private balconies in the new Mettle & Poise development. Featuring underfloor heating, spotlighting, wooden flooring and floor to ceiling windows throughout which comes unfurnished.

Goldsmith Row is adjacent to Hackney City Farm on Hackney Road, with Jesus Green's Columbia Road flower market on a Sunday and Broadway Market within walking distance.

Features

- One Double Bedroom
- Floor to Ceiling Windows
- Open Plan
- Wooden flooring
- Two Private Balconies
- Unfurnished

Gibbs Lane, London, E2



Total area (approx.): 65.5 sq. m (705.0 sq. ft)
Terrace / Balcony: 20.9 sq. m (225.0 sq. ft)