



Glasshouse Gardens, E20

£519 Per week

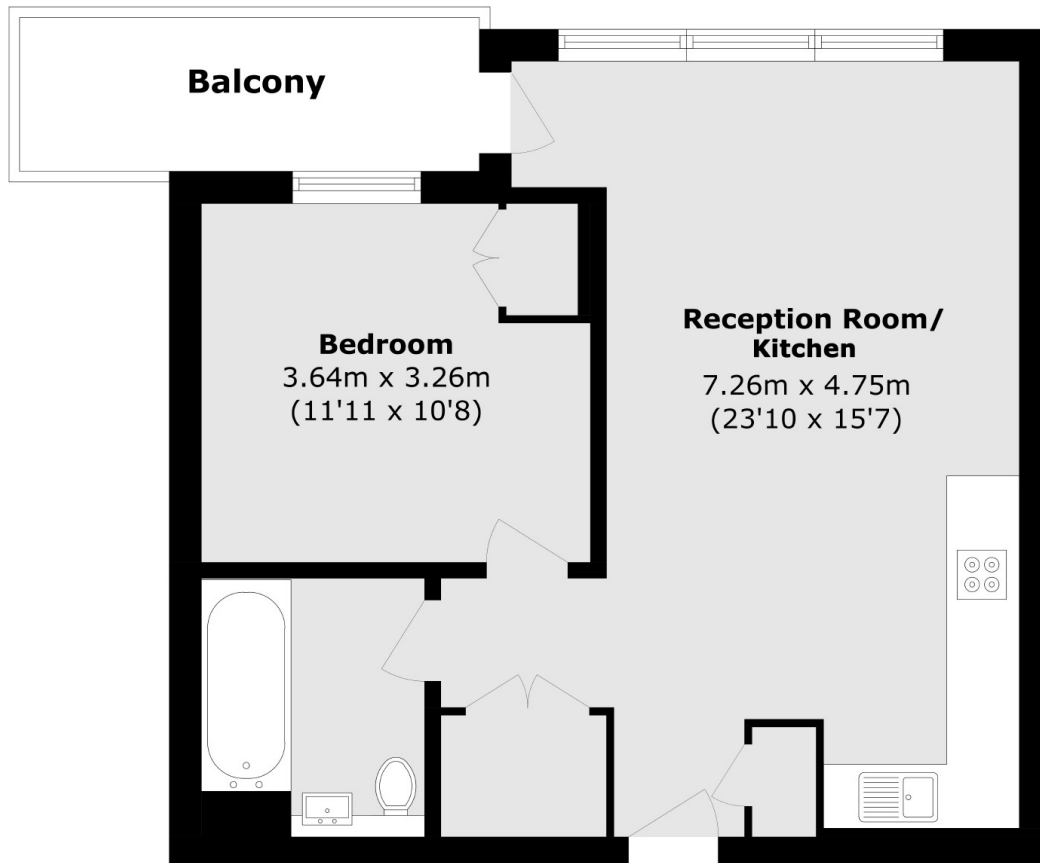
A one double bedroom apartment on the 17th floor of Cassia Point. This apartment has an open plan reception, wooden flooring, underfloor heating with a private balcony, residents gym and a 24hr concierge and secure bike storage.

Glasshouse Gardens is a new development overlooking Westfield shopping centre and within walking distance to Stratford underground, overground & DLR lines.

Features

- One Double Bedroom
- Open Plan
- Balcony
- Residents Gym
- Concierge
- Furnished

Glasshouse Gardens, London, E20



Total area (approx.): 51.6 sq. m (555.4 sq. ft)

Balcony area (approx.): 6.1 sq. m (65.6 sq. ft)