

## Helmsley Street, E8

£634 Per week

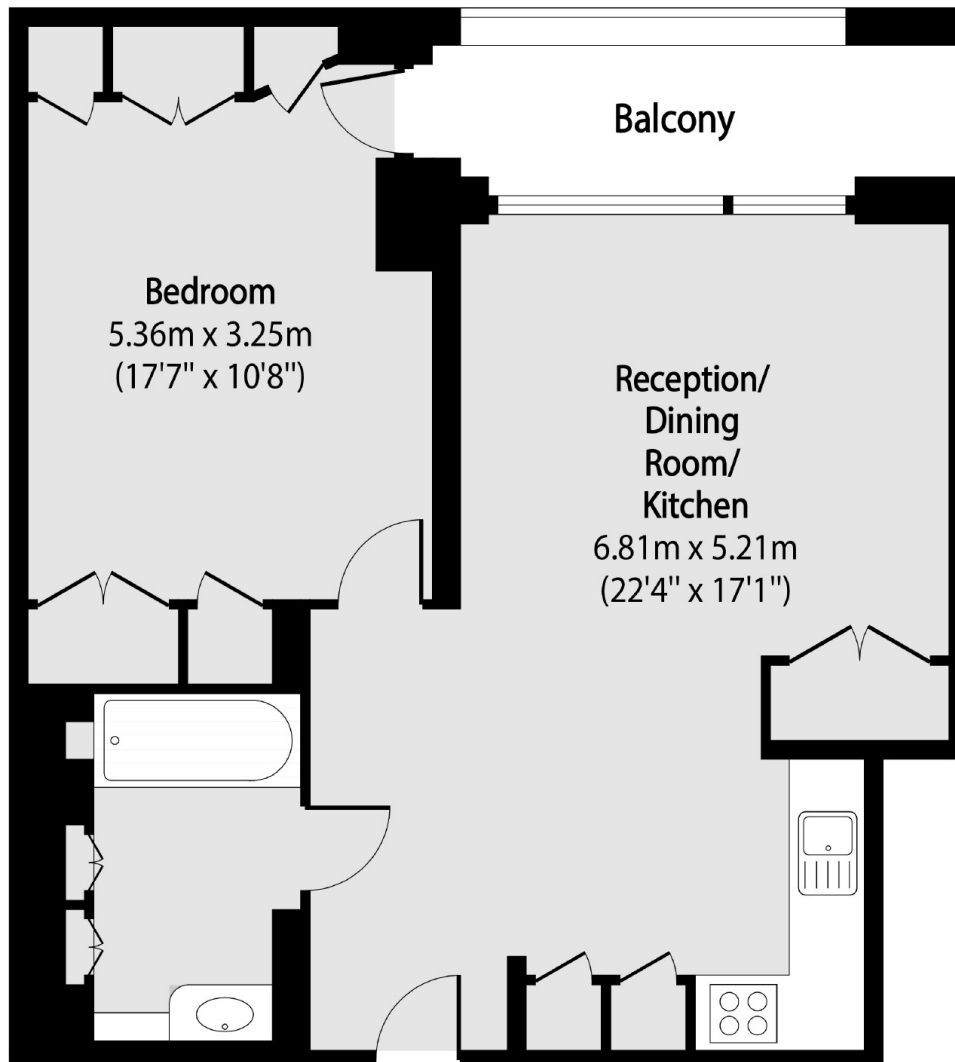
A beautiful one double bedroom apartment in the Monohaus Apartments. This spacious property comes with an open plan kitchen living area with floor to ceiling windows leading to the large private balcony.

Amazing location with easy reach of London Fields and Broadway markets for all local shops, bars and restaurants.

### Features

- One Double Bedroom
- Second Floor
- Concierge
- Open Plan
- Balcony
- Unfurnished

# Helmsley Street, London, E8



Total area (approx): 51.93 sq m (559 sq. ft)

Balcony total area (approx): 5.11 sq m (55 sq. ft)