



Alameda Place, E3

£470,000

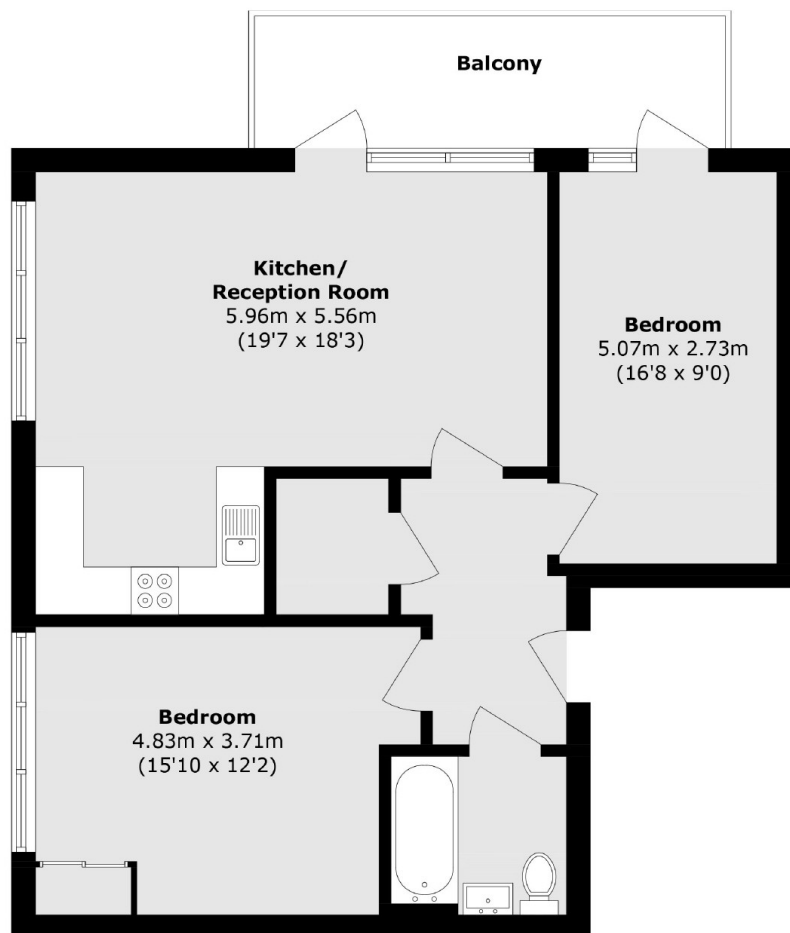
A modern two double bedroom apartment measuring in excess of 800 sq ft. And is Located within a secure development. This property has an open plan living and kitchen with floor to ceiling windows and double doors out onto a full width balcony. This property has an abundance of storage space, bike storage and is available chain free.

Centrally located within easy reach of Bow, Stratford, Hackney Wick and Victoria Park for all local shops, restaurants and cafés as well as great transport links including multiple tube stations within a third of a mile.

Features

- Two Double Bedrooms
- Modern
- Secure Development
- Bike Storage
- Balcony
- Chain Free

Alameda Place, London, E3



Total area (approx.): 75.1 sq. m (808.4 sq. ft)

Balcony area (approx.): 9.8 sq. m (105.5 sq. ft)

Dexters

Hackney
10 Broadway Market
London
E8 4QJ
Sales
0207 247 2440

Energy Rating: B. We aim to make our particulars both accurate and reliable. However they are not guaranteed; nor do they form part of an offer or contract. If you require clarification on any points then please contact us, especially if you're traveling some distance to view. Please note that appliances and heating systems have not been tested and therefore no warranties can be given as to their good working order.

 **RICS** | Regulated
Estate Agent
and Letting Agent

[dexters.co.uk](https://www.dexters.co.uk)