



Gibbs Lane, E2

£550,000

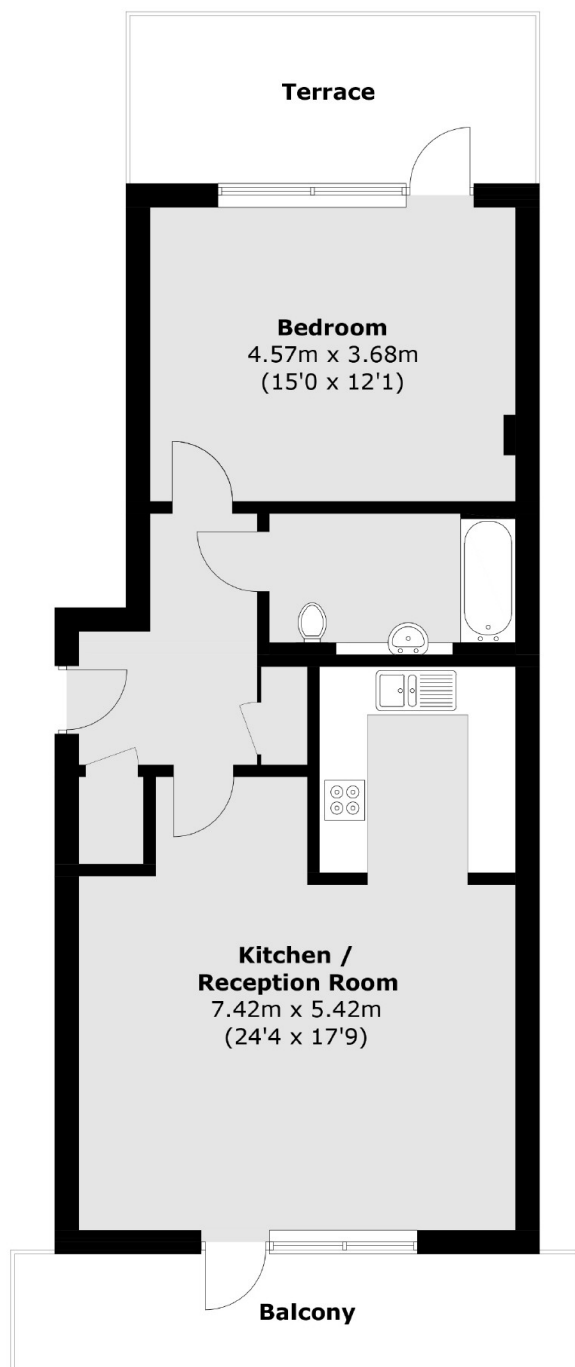
A spacious one double bedroom flat measuring in excess of 600 square foot. This property has an open plan living, dining and kitchen space with floor to ceiling windows and double doors leading out onto a private terrace, with a leafy outlook to Haggerston Park opposite. There is a large modern bathroom and a double bedroom with floor to ceiling windows and doors out to an additional private terrace.

Goldsmiths Row leads directly onto the ever popular Broadway Market and Regents Canal, with Hackney City farm adjacent and ample green spaces on the doorstep. The property is located on a pedestrianised street and is perfectly situated near local amenities and transport links to the City.

Features

- Two private balconies
- Lift Access
- Open Plan
- Haggerston Park
- Broadway Market
- Columbia Road

Gibbs Lane, London, E2



Total area (approx.): 65.5 sq. m (705.0 sq. ft)
Terrace / Balcony: 20.9 sq. m (225.0 sq. ft)

Dexters

Hackney
10 Broadway Market
London
E8 4QJ
Sales
0207 247 2440

Energy Rating: C. We aim to make our particulars both accurate and reliable. However they are not guaranteed; nor do they form part of an offer or contract. If you require clarification on any points then please contact us, especially if you're traveling some distance to view. Please note that appliances and heating systems have not been tested and therefore no warranties can be given as to their good working order.

 **RICS** | Regulated
Estate Agent
and Letting Agent

[dexters.co.uk](https://www.dexters.co.uk)