

Roach Road, E3

£634 Per week

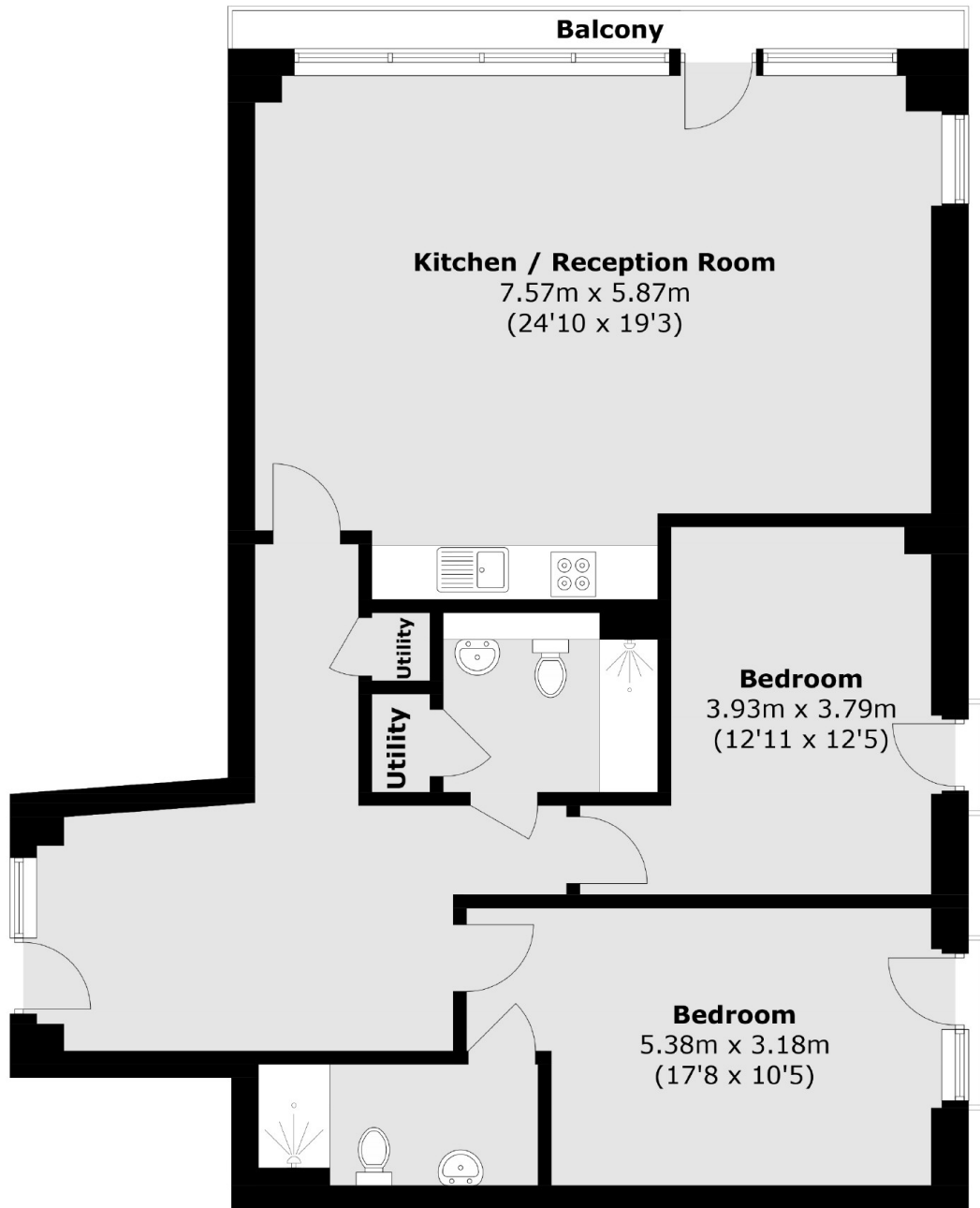
A two double bedroom apartment that measures in excess of 1000 square foot. Located within a secure development, this property offers an open plan living overlooking the canal with Juliette balconies off each room in the property which comes part furnished.

Omega works is situated on the corner of the Hertford Union Canal and the Lea Canal in the Hackney Wick area. This property has an abundance of Popular eateries, cafés and bars on its doorstep.

Features

- Two Double Bedrooms
- Over 1000 Sqft
- Open Plan
- Juliette Balconies
- Wooden flooring throughout
- Canal Views

Roach Road, London, E3



Total area (approx.): 101.7 sq. m (1,094.6 sq. ft)
Balcony area (approx.): 3.5 sq. m (37.7 sq. ft)

Dexters

Hackney
10 Broadway Market
London
E8 4QJ
Lettings
0207 247 2441

Energy Rating: C. We aim to make our particulars both accurate and reliable. However they are not guaranteed; nor do they form part of an offer or contract. If you require clarification on any points then please contact us, especially if you're traveling some distance to view. Please note that appliances and heating systems have not been tested and therefore no warranties can be given as to their good working order.

 **RICS** | Regulated
Estate Agent
and Letting Agent

dexters.co.uk