



Rookwood Way, E3

£425,000

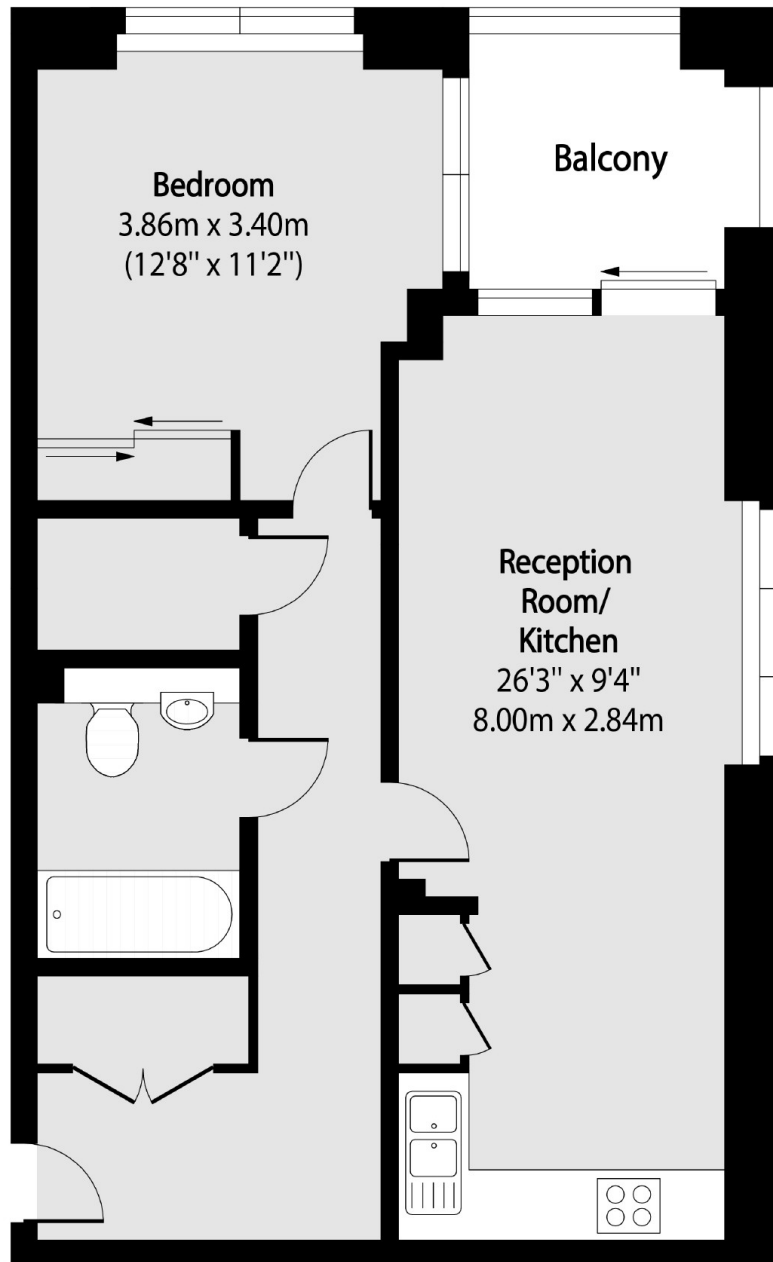
A modern one double bedroom apartment measuring 600 square feet located within a secure development. This property offers plan living room and kitchen with a dining space, generous amounts of built in storage and centralised family bathroom.

The property is located a short walk from the greeneries of Queen Elizabeth Olympic Park and Victoria Park. Hackney Wick overground station is also close by as well as Westfield Shopping centre across the park.

Features

- Private Balcony
- Long Lease
- Concierge Service
- Gym
- Victoria Park
- Canal Views

Rookwood Way, London, E3



Total area (approx): 55.74 sq m (600 sq. ft)

Balcony area (approx): 5.11 sq m (55 sq. ft)

Dexters

Hackney
10 Broadway Market
London
E8 4QJ
Sales
0207 247 2440

Energy Rating: B. We aim to make our particulars both accurate and reliable. However they are not guaranteed; nor do they form part of an offer or contract. If you require clarification on any points then please contact us, especially if you're traveling some distance to view. Please note that appliances and heating systems have not been tested and therefore no warranties can be given as to their good working order.

 **RICS** | Regulated
Estate Agent
and Letting Agent

[dexters.co.uk](https://www.dexters.co.uk)