



Wick Lane, E3

£575,000

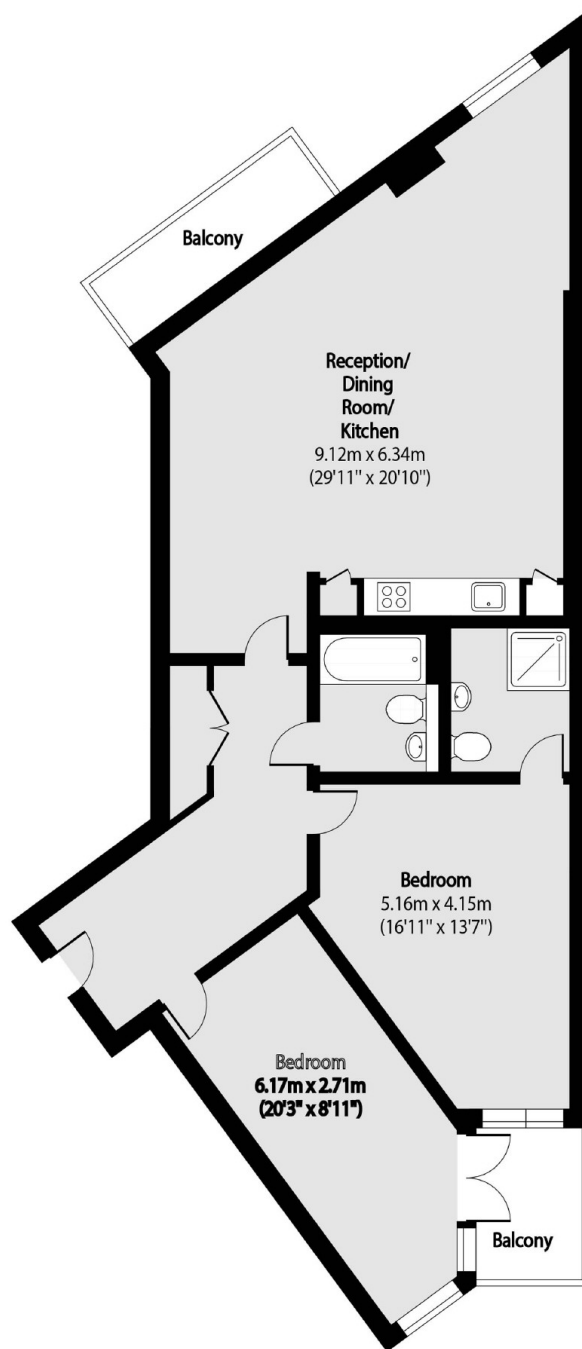
A two double bedroom apartment overlooking the River Lee with over 1,100 sqft of living space. This property has floor to ceiling windows throughout, allowing plenty of natural light, a large open plan living area, two modern bathrooms and two private balconies.

Situated between the greens of Queen Elizabeth Olympic Park and Victoria Park. Hackney Wick overground station is also close by as well as Westfield Shopping centre across the park.

Features

- Two Private Balconies
- Two Double Bedrooms
- Two Bathrooms
- On-Site Concierge
- Secure Entry
- Hackney Wick

Wick Lane, London, E3



Total area (approx): 104.69 sq m (1127 sq. ft)

Balcony total area (approx): 8.93 sq m (96 sq. ft)

Dexters

Hackney
10 Broadway Market
London
E8 4QJ
Sales
0207 247 2440

Energy Rating: C. We aim to make our particulars both accurate and reliable. However they are not guaranteed; nor do they form part of an offer or contract. If you require clarification on any points then please contact us, especially if you're traveling some distance to view. Please note that appliances and heating systems have not been tested and therefore no warranties can be given as to their good working order.

 **RICS** | Regulated
Estate Agent
and Letting Agent

[dexters.co.uk](https://www.dexters.co.uk)