



Rounton Road, E3

£450,000

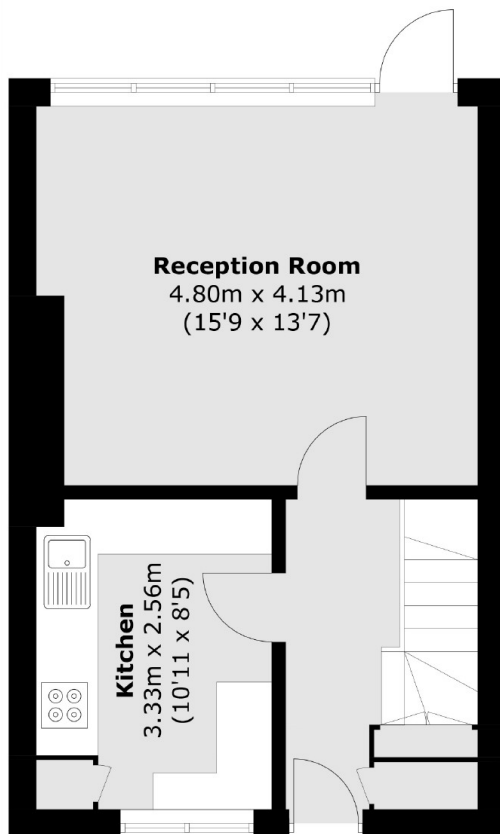
A three double bedroom split level maisonette with a south facing garden. This property has a separate kitchen, living room with direct access into the private garden and space to dine. There is three double bedrooms on the first floor with the main family bathroom and generous storage throughout.

The property is ideally located close to Mile End Station with good access to the City, Stratford Station and the Queen Elizabeth Olympic Park. There is also easy access to both Canary Wharf, Hackney and Victoria Park. Nearby ample green spaces such as Mile End and Tower Hamlets Park.

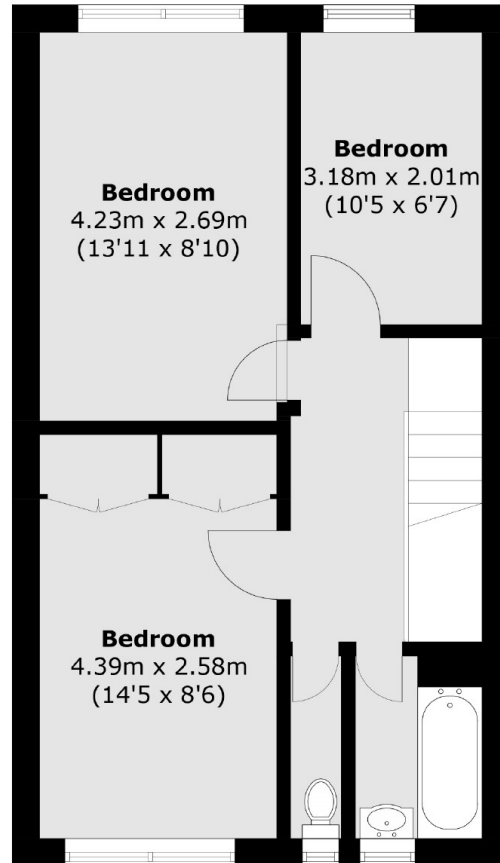
Features

- Three Double Bedrooms
- Private South Facing Garden
- Front Garden
- Maisonette
- Separate Kitchen
- Generous Storage

Rounton Road, London, E3



Ground Floor



First Floor

Total area (approx.): 79.2 sq. m (852.4 sq. ft)