



Wyke Road, E3

£430,000

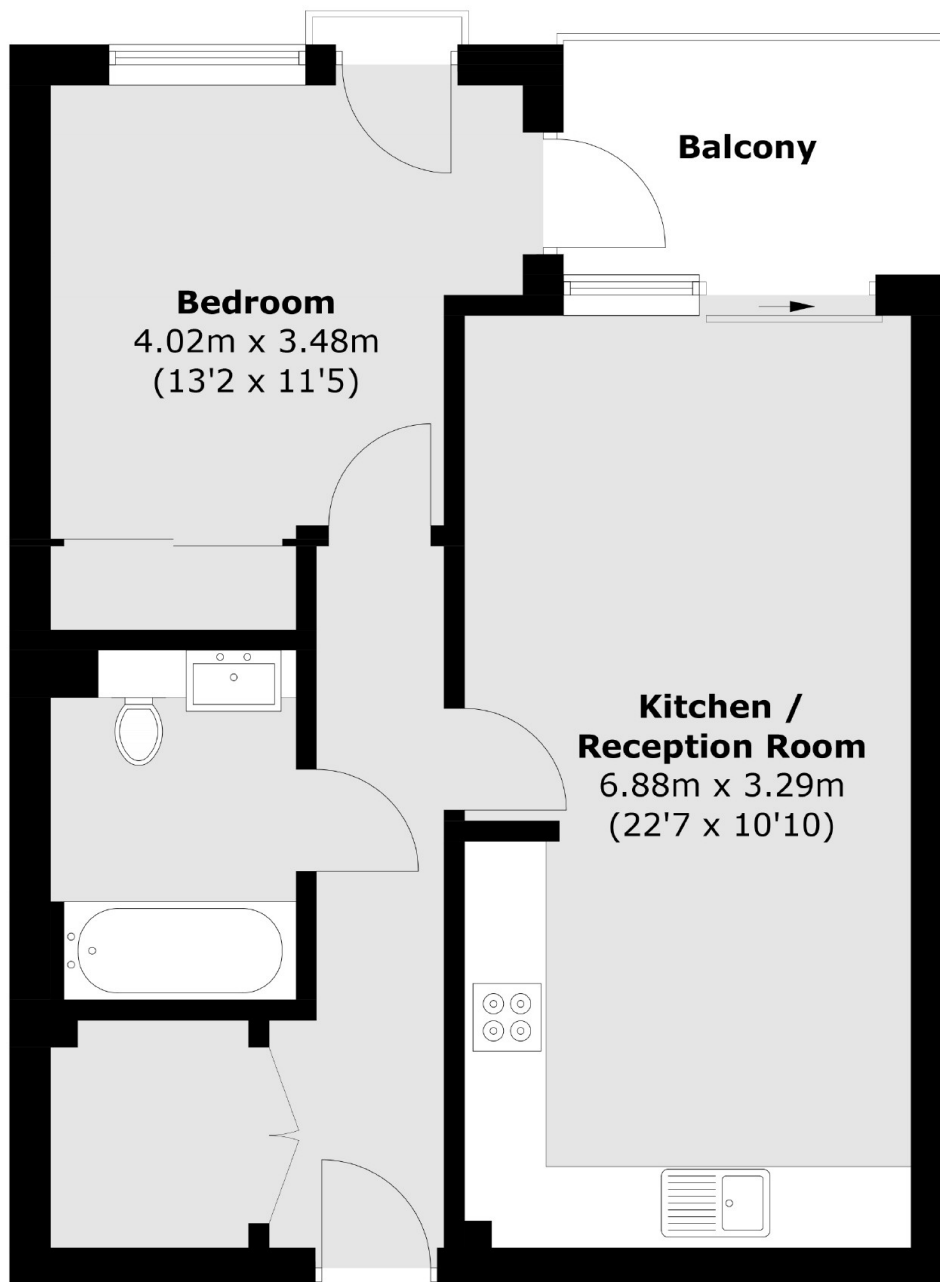
A modern one double bedroom, apartment located in one of East London's most vibrant areas; Hackney Wick. This property benefits from floor to ceiling sliding doors leading out onto a south west balcony, an open plan living kitchen area and the development offers a gym, bike storage and concierge.

The property is located a short walk from the greeneries of Queen Elizabeth Olympic Park and Victoria Park. Hackney Wick overground station is also close by as well as Westfield Shopping centre across the park.

Features

Offers in Excess of
Open Plan
Modern
Ample Storage
Concierge & Gym
Hertford Union Canal
Hackney Wick

Wyke Road, London, E3



Total area (approx.): 50.1 sq. m (539.3 sq. ft)
Balcony : 4.5 sq. m (48.4 sq. ft)

Dexters

Hackney
10 Broadway Market
London
E8 4QJ
Sales
0207 247 2440

Energy Rating: . We aim to make our particulars both accurate and reliable. However they are not guaranteed; nor do they form part of an offer or contract. If you require clarification on any points then please contact us, especially if you're traveling some distance to view. Please note that appliances and heating systems have not been tested and therefore no warranties can be given as to their good working order.

 **RICS** | Regulated
Estate Agent
and Letting Agent

dexters.co.uk