



Gibbs Lane, E2

£975,000

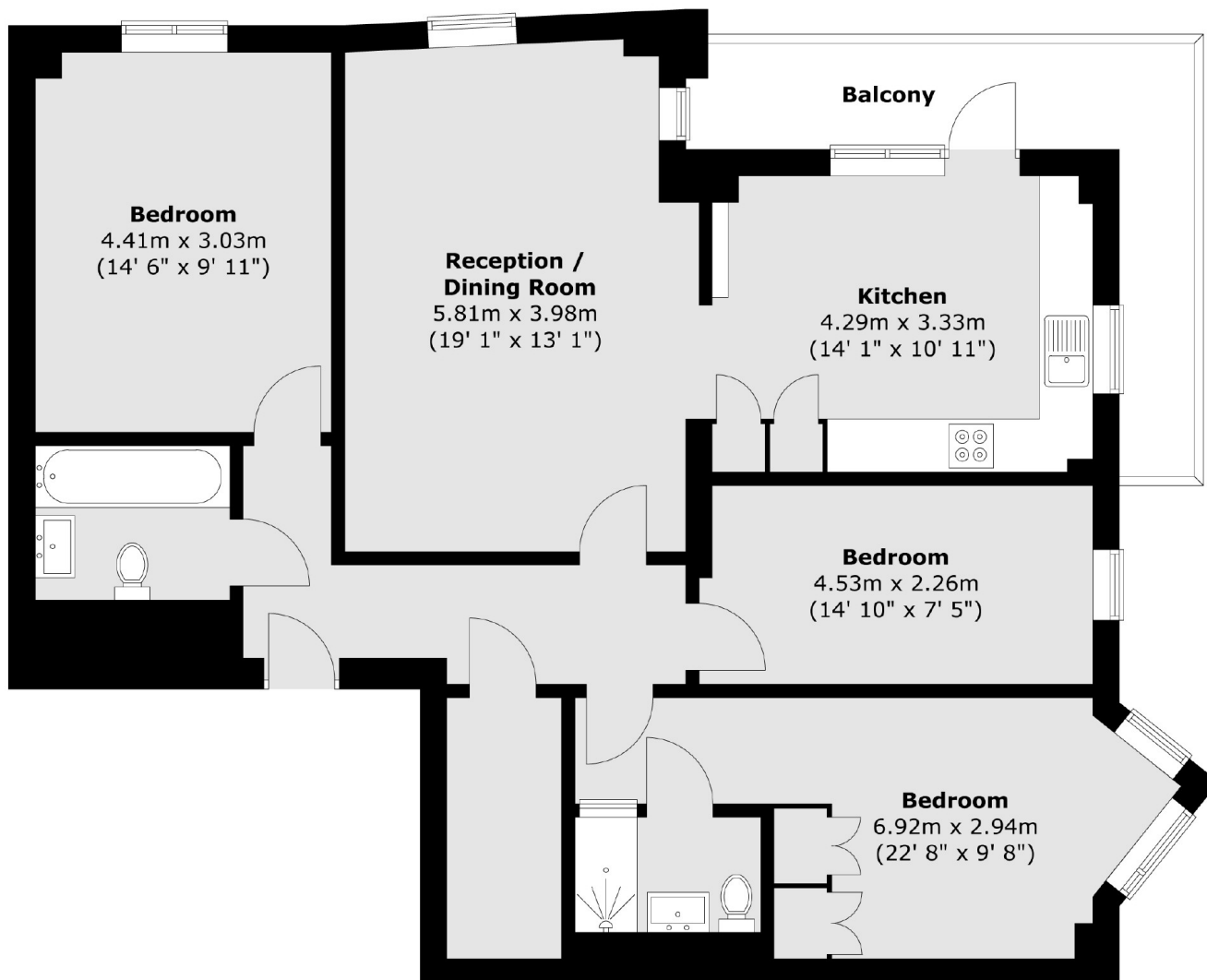
A three double bedroom, two bathroom apartment measuring in excess of 1,000 square feet. The property has three double bedrooms, the principle bedroom comes with an en-suite. The living space and kitchen are semi open plan, with space to dine in both. There is a wrap around balcony with views of Haggerston park and and all rooms have floor to ceiling windows.

Goldsmiths Row leads directly into the popular Broadway Market and Regents Canal, with Hackney City farm adjacent and ample greens nearby. The property is located perfectly near local amenities and transport links to the City.

Features

- Three Double Bedrooms
- Two Bathrooms
- Dual aspect Private Balcony
- Secure
- Lift Access
- Bike Storage

Gibbs Lane, London, E2



Total area (approx.) : 101.3 sq. m (1090 sq. ft)
Total balcony area (approx.) : 11.3 sq. m (122 sq. ft)