



Pownall Road, E8

£350,000

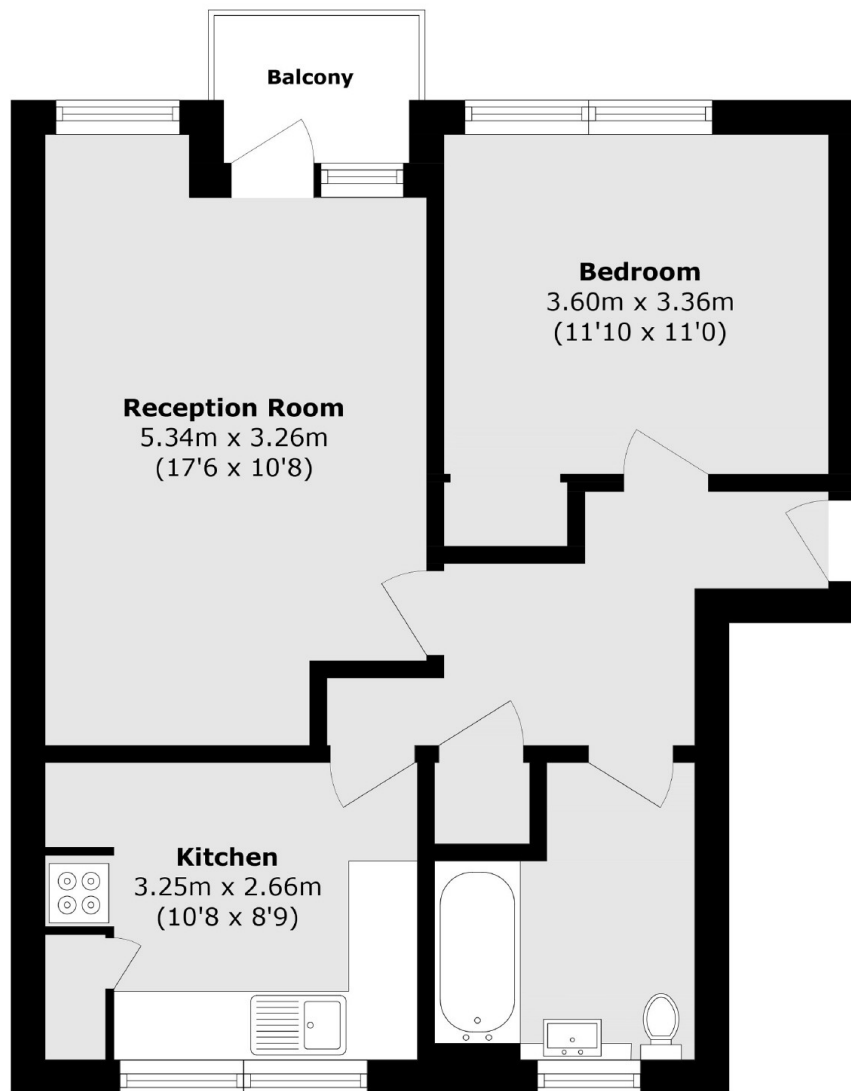
A one double bedroom purpose built apartment with a balcony overlooking the Regents Canal. This property measures in excess of 520sqft, It has a separate kitchen, generous living room with dining area and is being offered chain free.

Located 100 yards from Broadway Market, this property has an abundance of popular cafes, restaurants and shops. The regents canal on your doorstep with access to Islington and Kings Cross as well as Victoria Park. The nearest station is Haggerston on the overground with easy access to the city.

Features

- Chain Free
- In Excess of 520sqft
- Close to Broadway Market
- Balcony
- Secure Development
- Communal Garden

Pownall Road,
London, E8



Total area (approx): 149.22sq.m (529.55sq.ft)

Balcony area (approx): 2.33sq.m (24.77sq.ft)

Dexters

Hackney
10 Broadway Market
London
E8 4QJ
Sales
0207 247 2440

Energy Rating: . We aim to make our particulars both accurate and reliable. However they are not guaranteed; nor do they form part of an offer or contract. If you require clarification on any points then please contact us, especially if you're traveling some distance to view. Please note that appliances and heating systems have not been tested and therefore no warranties can be given as to their good working order.

 **RICS** | Regulated
Estate Agent
and Letting Agent

dexters.co.uk