

Wadeson Street, E2

£375,000

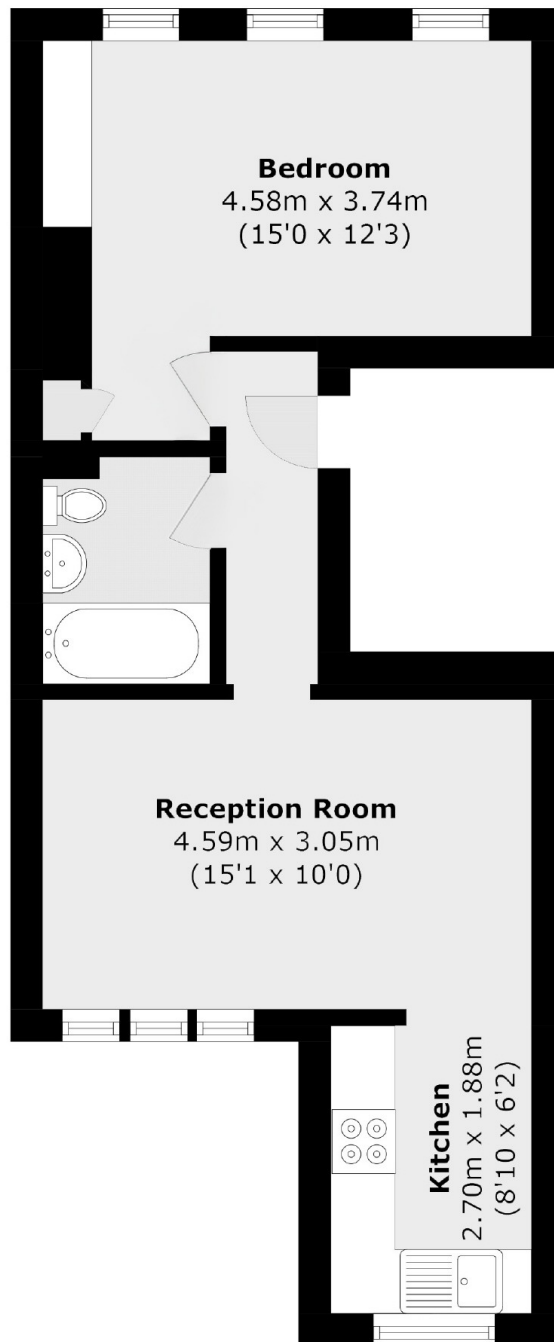
A bright one bedroom apartment located on a quiet street near to Victoria Park. Features includes sash windows, large double bedroom and would be best suited to someone wanting to put their own stamp on the property.

Wadeson Street is hidden on a quiet street next to Regents Canal with Victoria Park, Broadway Market and London Fields either side. Bethnal Green and Cambridge Heath stations are less than a mile away, with easy access to the City and West End.

Features

- Chain Free
- One Bedroom
- Period Features
- London Fields
- Victoria Park
- Blank Canvas

Wadeson Street,
London, E2



Total area (approx.): 40.1 sq. m (431.6 sq. ft)

Dexters

Hackney
10 Broadway Market
London
E8 4QJ
Sales
0207 247 2440

Energy Rating: C. We aim to make our particulars both accurate and reliable. However they are not guaranteed; nor do they form part of an offer or contract. If you require clarification on any points then please contact us, especially if you're traveling some distance to view. Please note that appliances and heating systems have not been tested and therefore no warranties can be given as to their good working order.

 **RICS** | Regulated
Estate Agent
and Letting Agent

[dexters.co.uk](https://www.dexters.co.uk)