



## Wadeson Street, E2

### £400,000

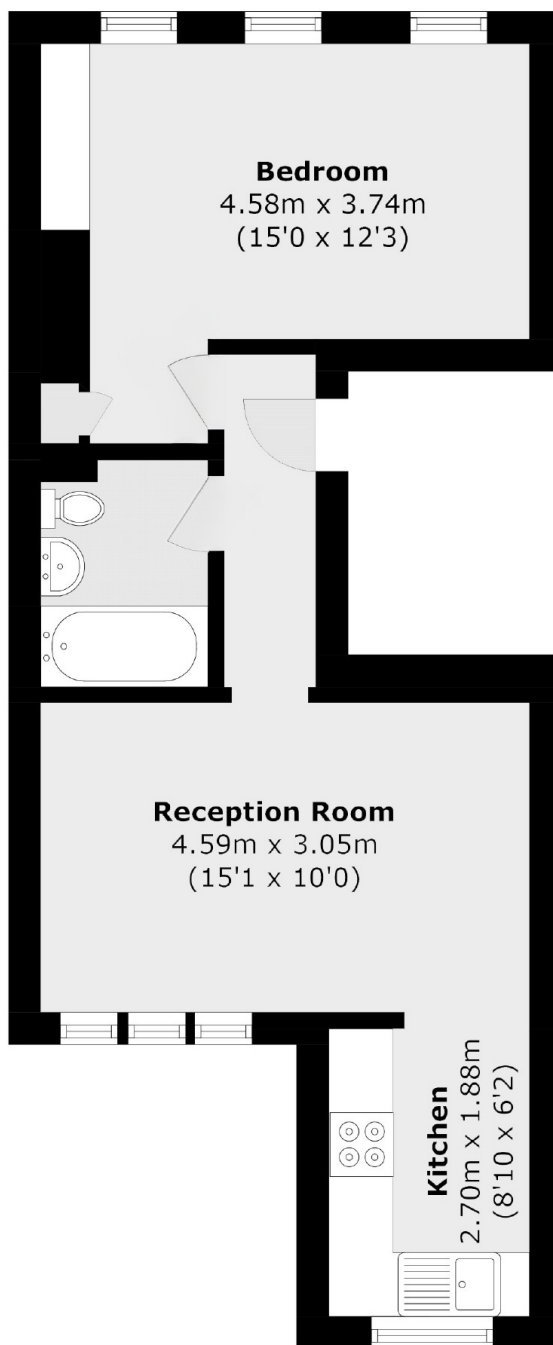
A bright one bedroom apartment located on a quiet street near to Victoria Park. Features includes sash windows, large double bedroom and would be best suited to someone wanting to put their own stamp on the property.

Wadeson Street is hidden on a quiet street next to Regents Canal with Victoria Park, Broadway Market and London Fields either side. Bethnal Green and Cambridge Heath stations are less than a mile away, with easy access to the City and West End.

### Features

- Chain Free
- One Bedroom
- Period Features
- London Fields
- Victoria Park
- Blank Canvas

# Wadeson Street, London, E2



Total area (approx.): 40.1 sq. m (431.6 sq. ft)