



Chatham Place, E9

£595,000

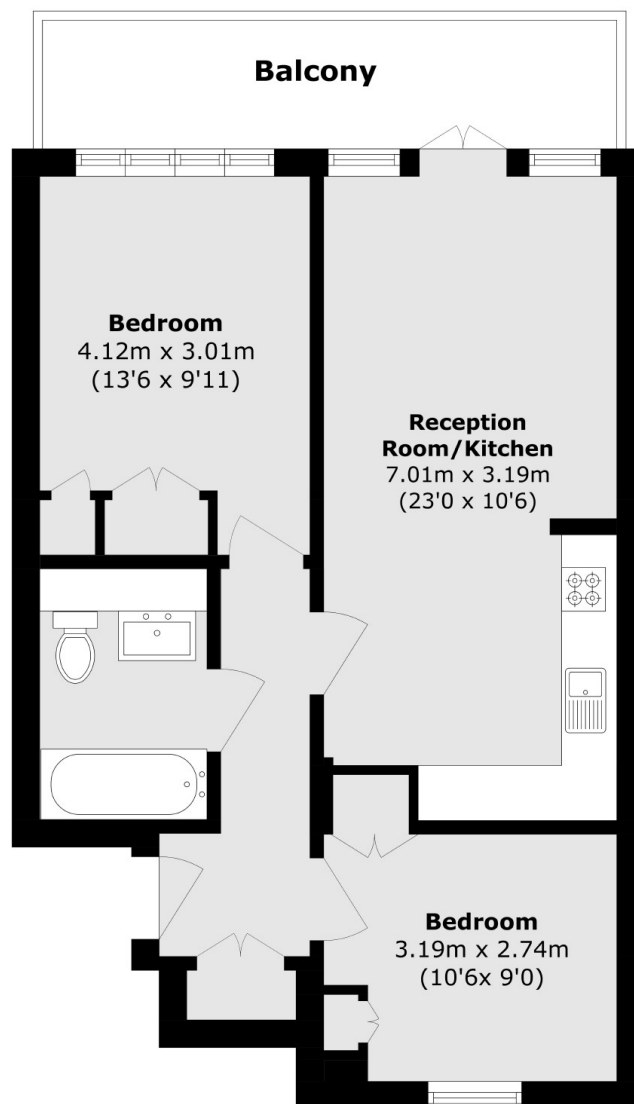
Based in a converted clothing factory, this bright modernised two bedroom apartment benefits from original features such as high ceilings, exposed brickwork, crittal windows, wooden flooring throughout, underfloor heating and a private balcony.

The popular Textile Building development is ideally located within walking distance of Hackney Central, Hackney Downs and Homerton Stations and is situated nearby green spaces such as London Fields and Victoria Park. The surrounding area also consists of endless bars, eateries, supermarkets and schools.

Features

- Chain Free
- Converted Clothing Factory
- Two Bedrooms
- Private Balcony
- Crittal Windows
- Concierge

Chatham Place, London, E9



Total area (approx.): 56.7 sq. m (610.3 sq. ft)

Balcony area (approx.): 8.7 sq. m (93.6 sq. ft)

Dexters

Hackney
10 Broadway Market
London
E8 4QJ
Sales
0207 247 2440

Energy Rating: B. We aim to make our particulars both accurate and reliable. However they are not guaranteed; nor do they form part of an offer or contract. If you require clarification on any points then please contact us, especially if you're traveling some distance to view. Please note that appliances and heating systems have not been tested and therefore no warranties can be given as to their good working order.

 **RICS** | Regulated
Estate Agent
and Letting Agent

[dexters.co.uk](https://www.dexters.co.uk)