



Louisa Close, E9

£900,000

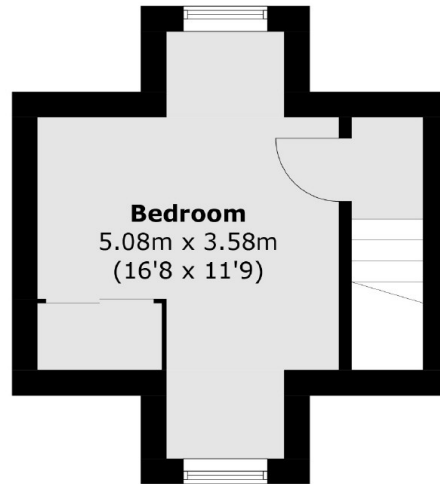
A three double bedroom, three storey freehold mews house measuring in excess of 1000sqft with a private courtyard garden. This property has a separate kitchen and living area on the ground floor. There are two double bedrooms on the first floor and one located on the top floor, along with a family bathroom.

Located in Victoria Park Village this Mews style property has gated and secure entrance and is within 200 yards of the many famous shops, restaurants and cafes.

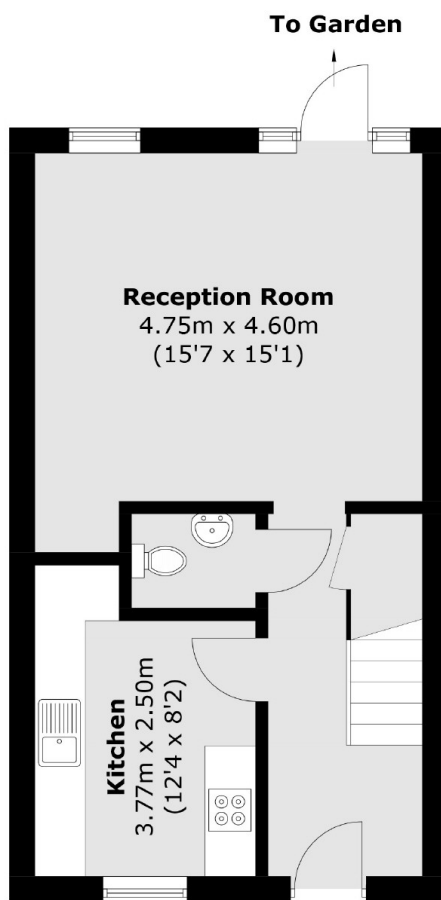
Features

- Three Double Bedrooms
- 1000 Square Ft
- Private Secure Mews
- Freehold
- Parking
- Garden

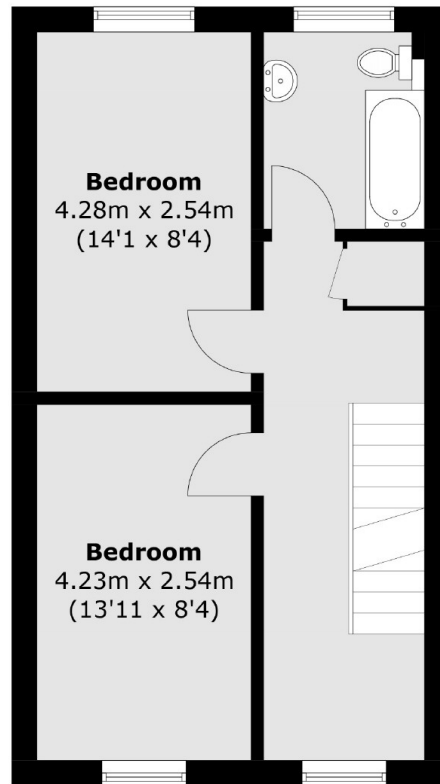
Louisa Close, London, E9



Second Floor



Ground Floor



First Floor

Total area (approx.): 96.3 sq. m (1,036.5 sq. ft)