



## Mentmore Terrace, E8

### £900,000

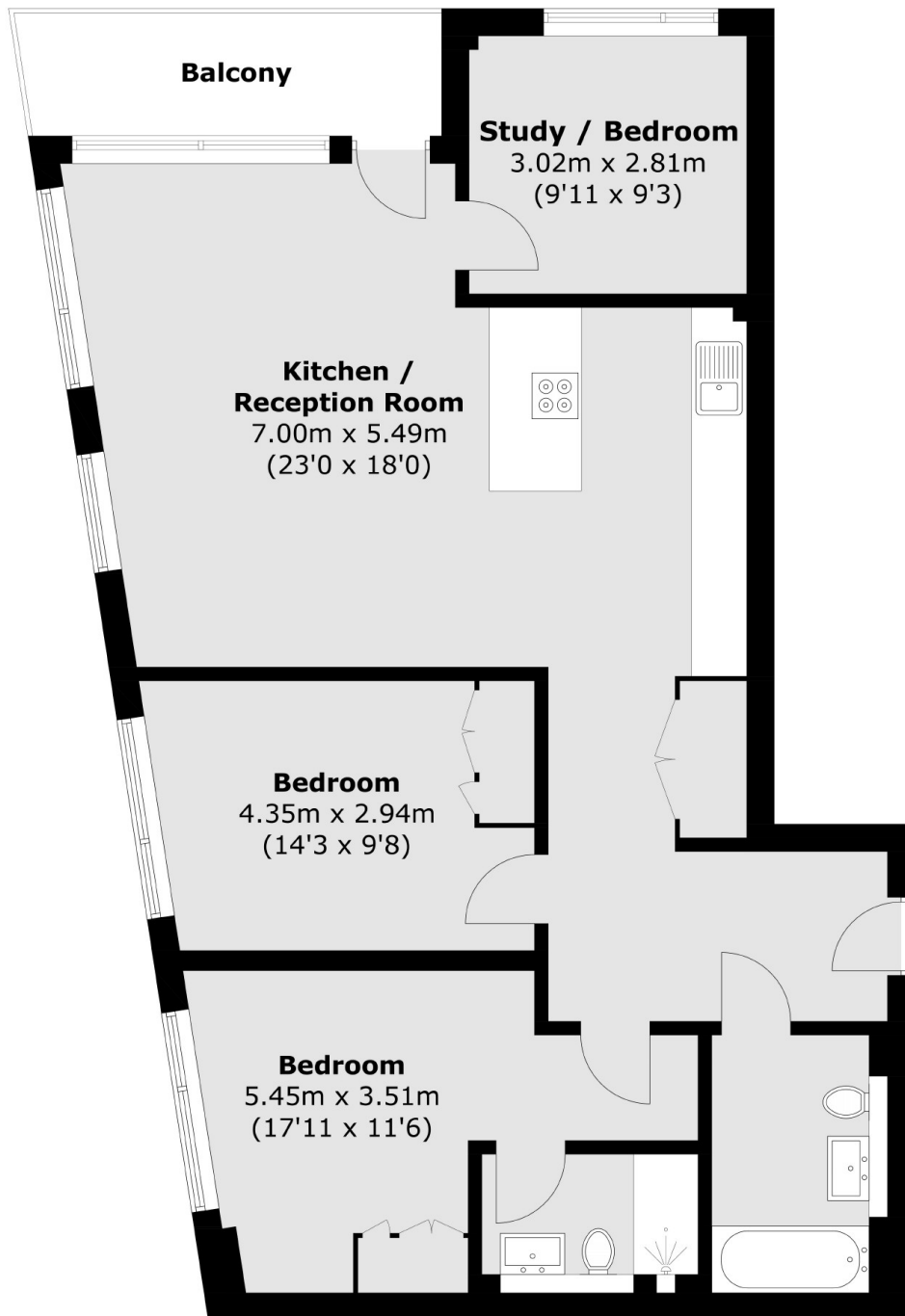
A three double bedroom apartment measuring in excess of 990 square foot with a private terrace. This property has a modern open plan kitchen and living room with peninsula island, large family bathroom and engineered wooden flooring throughout. There are floor to ceiling windows in all rooms and this apartment access to a concierge and swimming pool.

Mentmore Terrace is perfectly located next to London Fields overground station and London Fields green and around the corner from Broadway Market with endless independent bars, restaurants and cafés.

### Features

- Three Double Bedrooms
- Balcony
- Open Plan
- Concierge
- Swimming Pool
- Wooden Flooring

# Mentmore Terrace, London, E8



Total area (approx.): 92.2 sq. m (992.4 sq. ft)  
Balcony: 6.1 sq. m (65.6 sq. ft)

## Dexters

Hackney  
10 Broadway Market  
London  
E8 4QJ  
Sales  
0207 247 2440

Energy Rating: B. We aim to make our particulars both accurate and reliable. However they are not guaranteed; nor do they form part of an offer or contract. If you require clarification on any points then please contact us, especially if you're traveling some distance to view. Please note that appliances and heating systems have not been tested and therefore no warranties can be given as to their good working order.

 **RICS** | Regulated  
Estate Agent  
and Letting Agent

[dexters.co.uk](https://www.dexters.co.uk)