



St. Thomas's Square, E9

£250,000

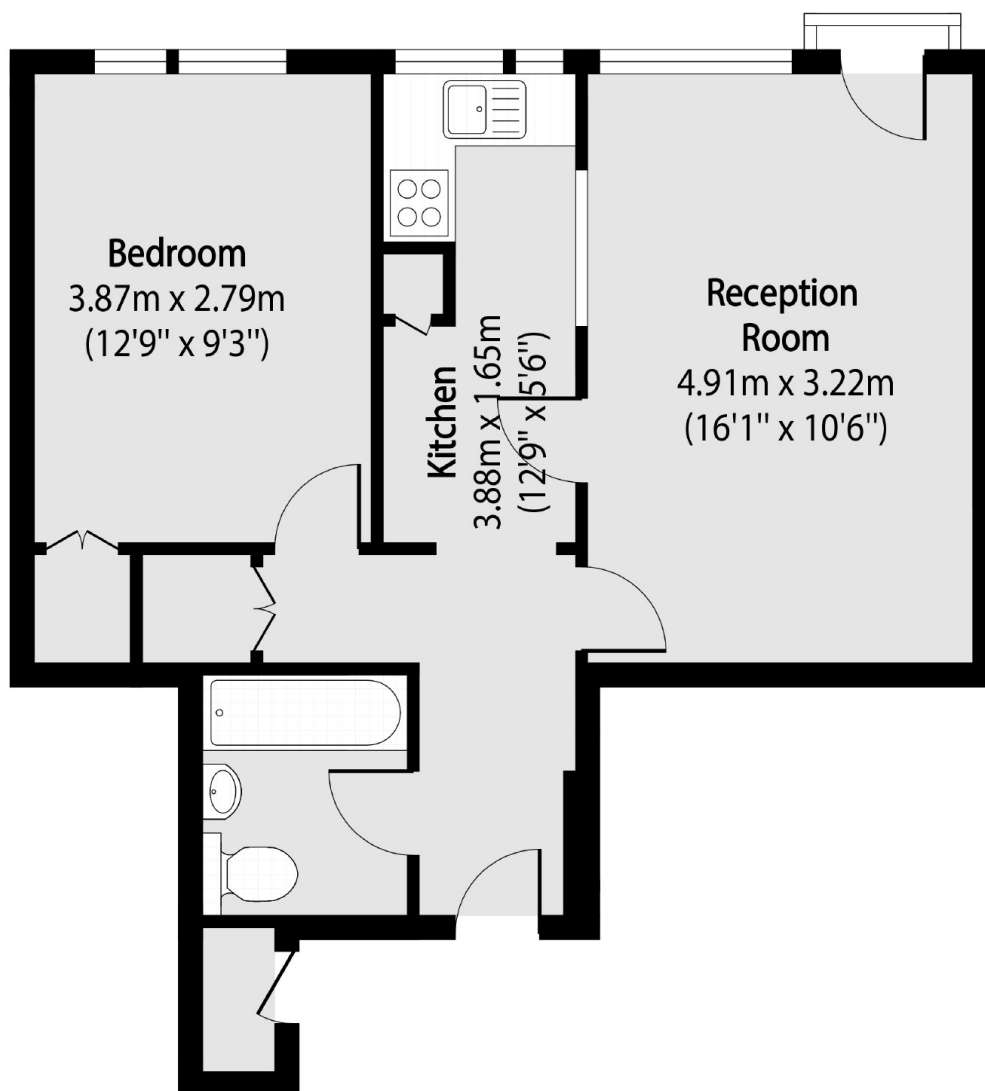
A one double bedroom apartment located within a secure purpose build block with picturesque communal gardens. This property measures in excess of 481 square feet, this property has a separate kitchen, generous living room and good storage.

Located 200 yards from Mare Street this property has an abundance of cafes, shops and eateries close by London Fields and Hackney Central.

Features

One Double Bedroom
Separate Kitchen
Over 462 square foot
Communal Gardens
Close to Mare Street
Broadway Market

St. Thomas's Square,
London, E9



Total area (approx): 44.76 sq m (482 sq. ft)
(Excluding external storage)