



Albion Drive, E8
£1,950,000

Dexters



Albion Drive, E8

A three storey, three bedroom Victorian mid-terrace house with rear conservatory and manicured garden. This property has been lovingly maintained by the current owners and maintains many of its period features and has two bathrooms.

You enter the house on the raised ground floor with a dual aspect living room to your left and engineered wooden flooring throughout. The main room on this level has floor to ceiling sash windows on both the front elevation and rear elevation to allow light to flood the house. There is an office/bedroom to the rear of the house that overlooks the garden.

On the lower ground floor there is an open plan kitchen with dedicated dining space, a conservatory used as a second living room and door out into the garden. In addition there is a utility room and bathroom on this level.

On the top floor there are two double bedrooms, the principal room has a walk in wardrobe and there is a modern bathroom on this level.

Located on Albion Drive, and off Albion Square, this property is on one of Hackney's most desirable locations. Haggerston Station is a 200 yard walk and the many shops and restaurants of Kingsland Road are under a quarter of a mile walk away. Broadway Market is just over half a mile walk away with its array of shops, cafes and bars.

Features

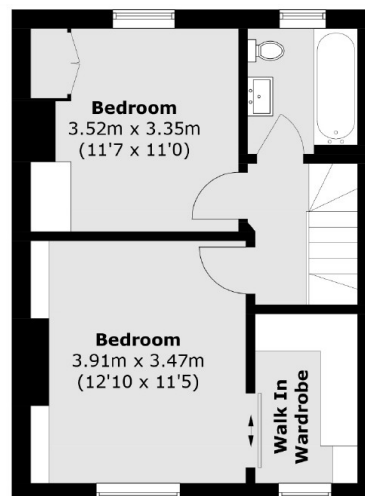
- Three Bedrooms
- Two Bathroom
- Victorian
- Conservatory
- Over 1600sqft
- Rear Garden



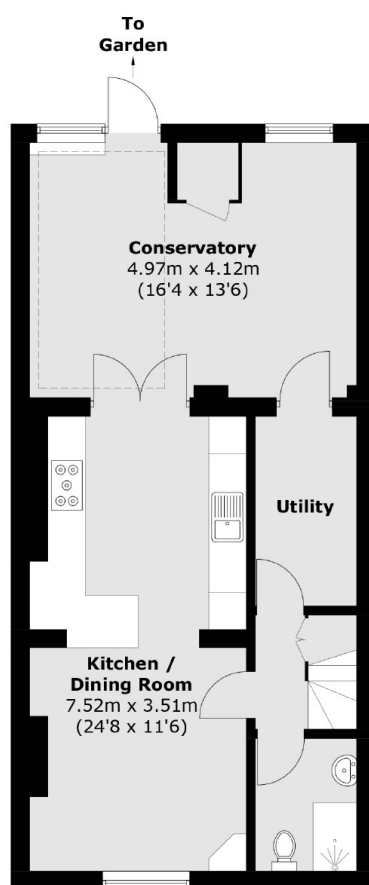




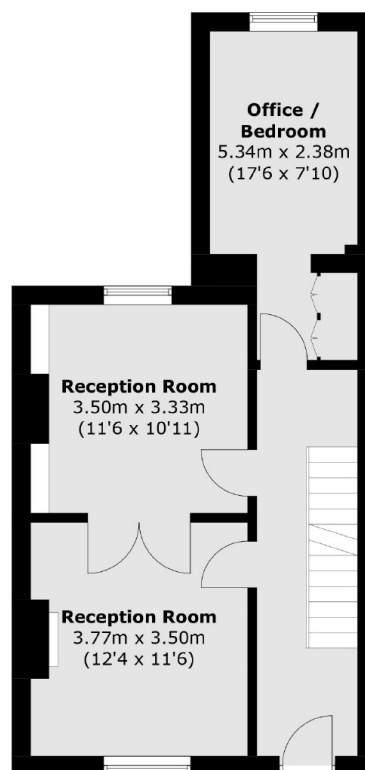
Albion Drive, London, E8



First Floor



Lower Ground Floor



Raised Ground Floor

Total area (approx.): 149.8 sq. m (1,612.4 sq. ft)