

Zealand Road, E3

£625,000

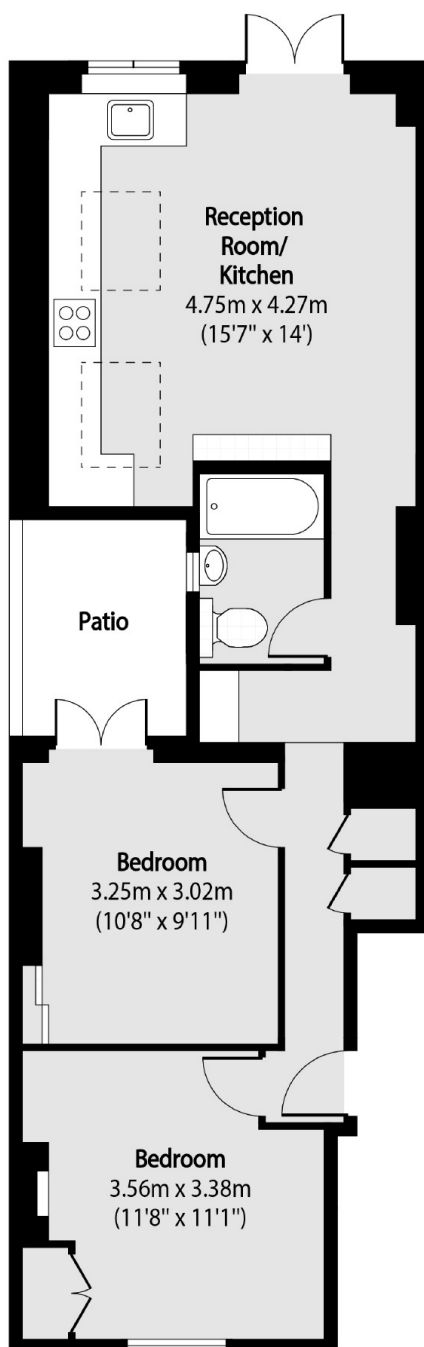
This bright, two bedroom garden flat is on one of the prime roads in Bow. The main bedroom opens up to a private patio courtyard. The kitchen with ample space to dine is bathed in an abundance of natural light due to the two large skylights and the french doors that open to the private rear garden. The front bedroom is complemented with a large sash window and shutters that allow both plenty of natural light and privacy.

Zealand Road is located just off Roman Road with a vast variety of cafes, shops and eateries. The nearest station is Mile End (Central, District and Circle lines). Victoria Park is under a quarter of a mile away.

Features

- Two Double Bedrooms
- Private Rear Garden
- Patio Courtyard
- Wooden Flooring
- High Ceilings
- Victoria Park

Zealand Road, London, E3



Total area (approx): 54.44 sq m (586 sq. ft)

Dexters

Hackney
10 Broadway Market
London
E8 4QJ
Sales
0207 247 2440

Energy Rating: C. We aim to make our particulars both accurate and reliable. However they are not guaranteed; nor do they form part of an offer or contract. If you require clarification on any points then please contact us, especially if you're traveling some distance to view. Please note that appliances and heating systems have not been tested and therefore no warranties can be given as to their good working order.

 **RICS** | Regulated
Estate Agent
and Letting Agent

[dexters.co.uk](https://www.dexters.co.uk)