



Mapledene Road, E8
£1,300,000

Dexters



Mapledene Road, E8

A five bedroom freehold house with a generous west facing garden. This property measures in excess of 1,360SqFt and is split over three levels with a loft conversion and two bathrooms. It is being offered Chain Free.

On entering the house, you have a large living room and dining space with double doors out into the garden. There is a separate kitchen with access to a walk in pantry. On this level there is American oak flooring in the hallway and living room.

On the first floor there are three double bedrooms and a family bathroom. The top floor has two further bedrooms and an en suite as well as storage space on the landing area.

Located in a cul-de-sac on Mapledene road this property sits in the heart of the London Fields Conservation Area. Broadway Market and its many shops, cafes, bars and Eateries are under half a mile walk. The nearest station is London Fields Overground.

Features

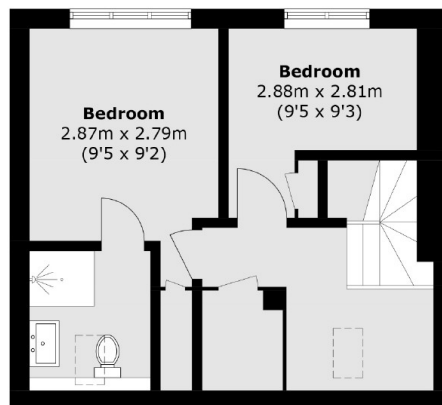
- Five Bedrooms
- Chain Free
- Private Garden
- Loft Conversion
- Over 1,360 Square Feet
- London Fields



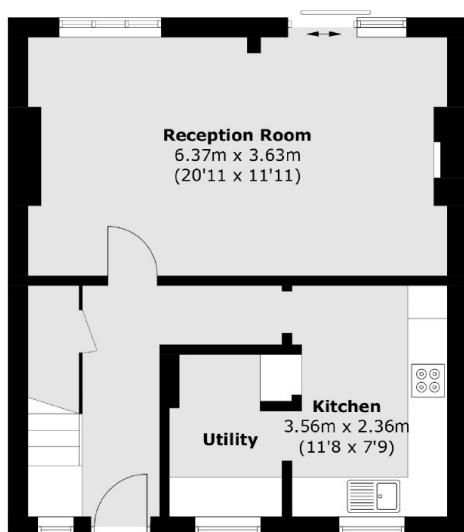




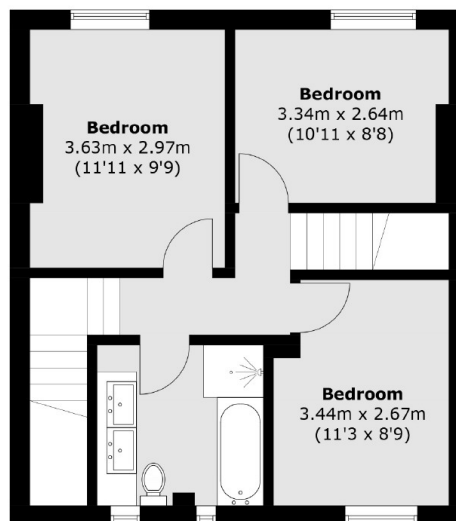
Mapledene Road, London, E8



Second Floor



Ground Floor



First Floor

Total area (approx.): 126.8 sq. m (1364.8 sq. ft)