



Kay Street, E2

£675,000

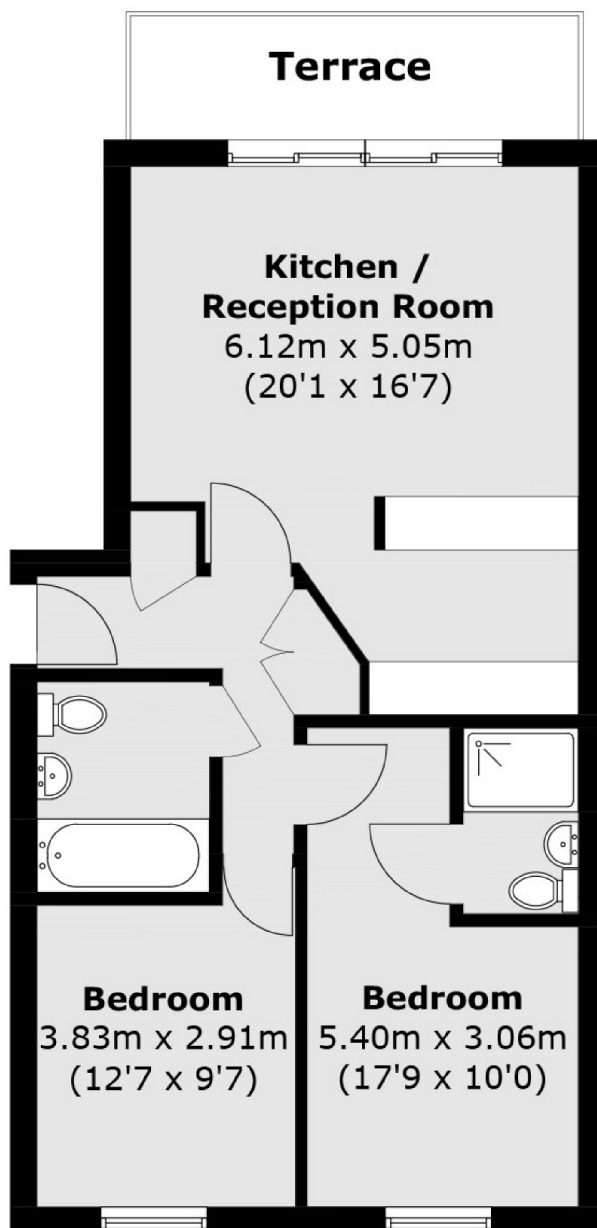
A two double bedroom, two bathroom apartment with a private courtyard garden. This property has an open plan kitchen and living room with modern kitchen, floor to ceiling double doors that open out onto the outdoor area and laminate flooring throughout.

This apartment is located just off Goldsmiths Row which leads directly into the popular Broadway Market and Regents Canal, with Hackney City farm adjacent and ample green space nearby. The property is located perfectly near local amenities and transport links to the City.

Features

- Two Double Bedrooms
- Two Bathrooms
- Private Courtyard Garden
- Communal Roof Terrace
- Open Plan
- Secure Development

Kay Street, London, E2



Total area (approx.): 66.7 sq. m (717.9 sq. ft)

Terrace area (approx.): 7.0 sq. m (75.3 sq. ft)