



Weatherley Close, E3 £400,000

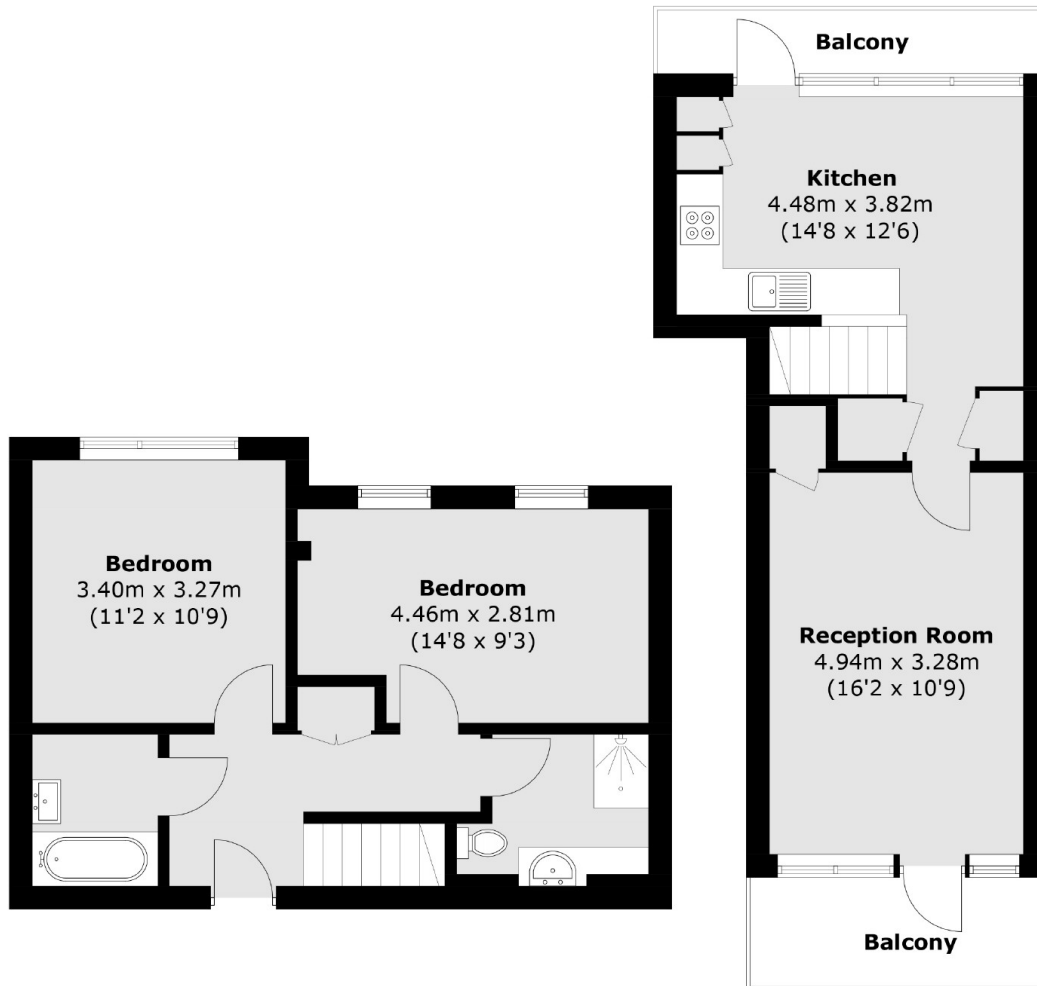
A bright two bed, two bathroom apartment with separate kitchen/dining and living rooms. The property also has two private balconies, with a view over London from the south facing one.

Located on Weatherley Close, a quiet residential cul-de-sac. This property offers an abundance of local amenities, including restaurants, shops and cafés within half a mile close to Mile End Park. The nearest station is Devons Road within half a mile walk with Mile End Station just over half a mile walk.

Features

- Two Double Bedrooms
- Two Bathrooms
- Two Private Balconies
- Parking Available
- Communal Gardens
- Mile End Park
- Canary Wharf Views

Weatherley Close, London, E3



Fourth Floor

Fifth Floor

Total area (approx.): 76.8 sq. m (826.6 sq. ft)

Balcony (approx.): 9.4 sq. m (101.2 sq. ft)