



Anderson Square, E3

£576 Per week

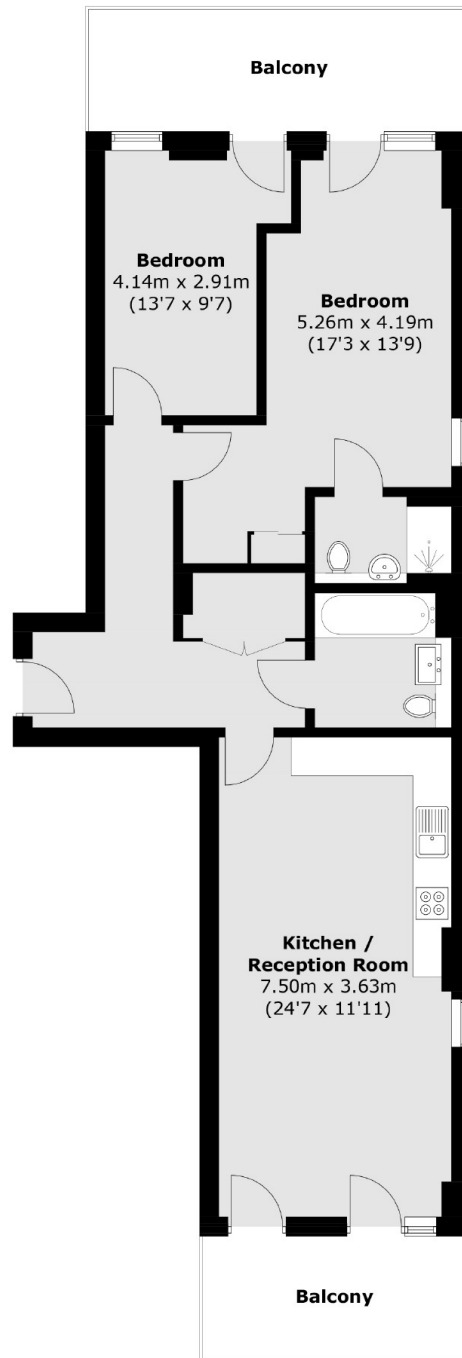
A large two bedroom apartment on the third floor of this sought after development. This spacious property has a modern open plan reception, wood flooring and a private terrace overlooking the River Lea.

Bow River Village is within easy reach of the Bromley-By-Bow station, Westfield Shopping Centre and the Olympic Park.

Features

- Two Double Bedrooms
- Two Bathrooms
- Open Plan
- Third Floor
- Two Private Terrace
- Wooden Flooring

Anderson Square, London, E3



Total area (approx.): 78.8 sq. m (848.1 sq. ft)
Balcony area (approx.): 19.2 sq. m (206.7 sq. ft)