



Malvern Road, E8
£1,700,000

Dexters



Malvern Road, E8

An end of terrace, three bedroom, three storey Victorian house on one of Hackneys prime roads. This property has maintained many of its original period features and benefits from a south east facing garden, open plan kitchen and dining room as well as a dual aspect living space on the raised ground floor.

On entering at raised ground floor level through a gated front garden, you have a dual aspect living room with sash windows, original doors and a feature fireplace. To the rear there is a bedroom currently used as a walk in wardrobe.

On the lower ground level there is an open plan kitchen and dining area with a shower room incorporated into the side return. There are double doors out onto decking and into the east facing lush garden. As the property is end of terrace, there is a side gate at rear of garden too.

On the top floor there is a modern family bathroom and two further double bedrooms all with sash windows.

Located a short walk away from London Fields Overground Station, London Fields Park and Broadway Market with its many eateries, bars and shops.

Features

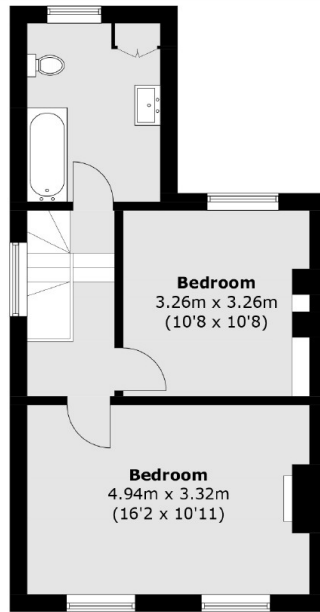
- Three Bedrooms
- Victorian Features
- End of Terrace
- Garden
- Malvern Road
- Open Plan Kitchen



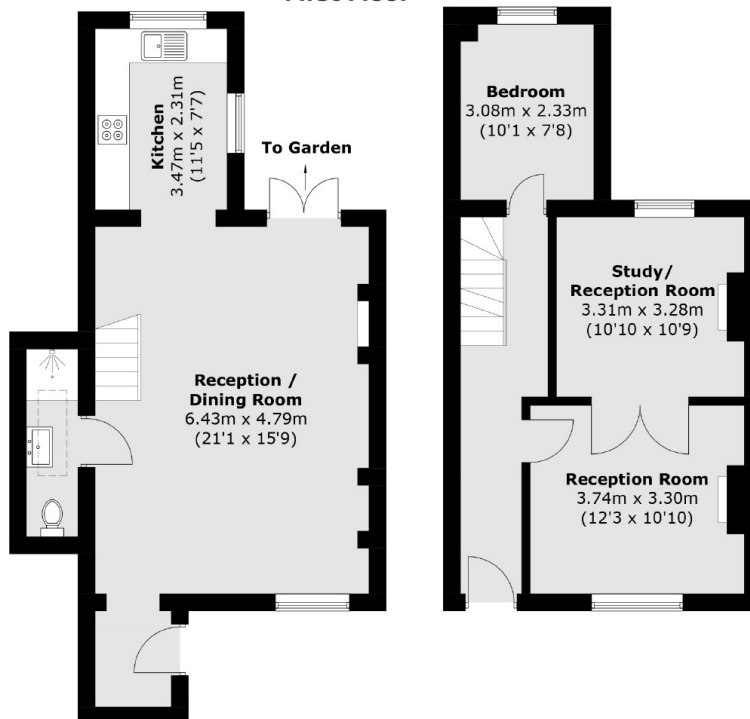




Malvern Road, London, E8



First Floor



Lower Ground Floor

Ground Floor

Total area (approx.): 127.3 sq. m (1,370.2 sq. ft)