



Kay Street, E2

£700,000

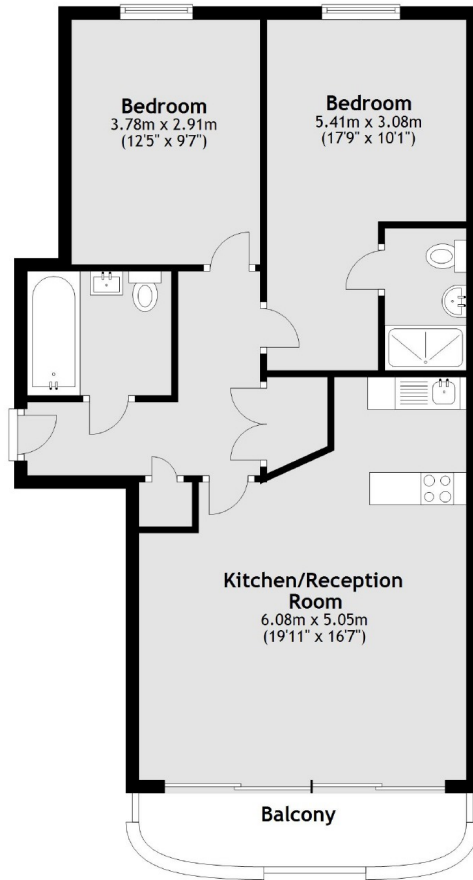
A two double bedroom, two bathroom apartment with far reaching views of city skyline. This property has an open plan kitchen and living room with modern kitchen, floor to ceiling double doors that open out onto the private terrace and chevron wooden flooring throughout.

This apartment is located just off Goldsmiths Row which leads directly into the popular Broadway Market and Regents Canal, with Hackney City farm adjacent and ample greens nearby. The property is located perfectly near local amenities and transport links to the City.

Features

- Two Double Bedrooms
- Two Bathrooms
- Far Reaching Views
- Balcony
- Communal Roof Terrace
- Open Plan
- Wooden Flooring

Kay Street, London, E2



Main area: Approx. 68.7 sq. metres (739.4 sq. feet)
Plus balconies, approx. 5.8 sq. metres (62.2 sq. feet)