

Mostyn Grove, E3

£480,000

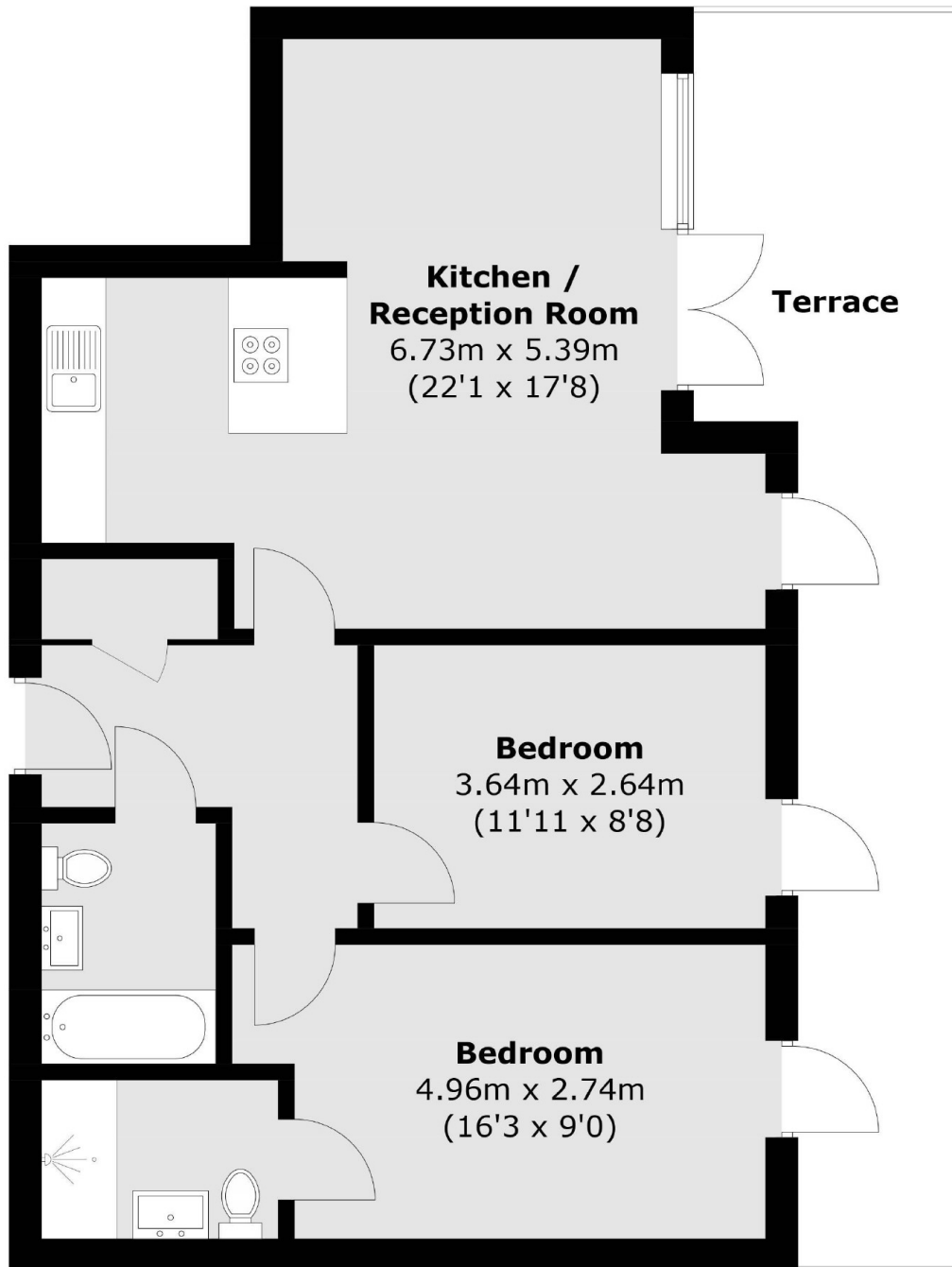
A two double bedroom top floor apartment with panoramic views from its private east facing terrace. This property offers open plan living with space to dine, has floor to ceiling windows throughout and access to the terrace from both bedrooms as well as the living area. This property is being sold chain free, there is a concierge, lift access and secure fob entry.

Ideally located under a miles walk from both Bow Road and Mile End Tube stations, making for great transport links in and around the city. Also close by to popular amenities of Bow including Roman Road Market, Victoria Park and Queen Elizabeth Park.

Features

- Two Double Bedrooms
- Chain Free
- Modern Bathrooms
- Secure Development
- Top Floor
- Private Terrace
- Communal Gardens

Mostyn Grove, London, E3



Total area (approx.): 67.2 sq. m (723.3 sq. ft)
Terrace area : 21.2 sq. m (228.2 sq. ft)