

## Goldsmiths Row, E2

### £450,000

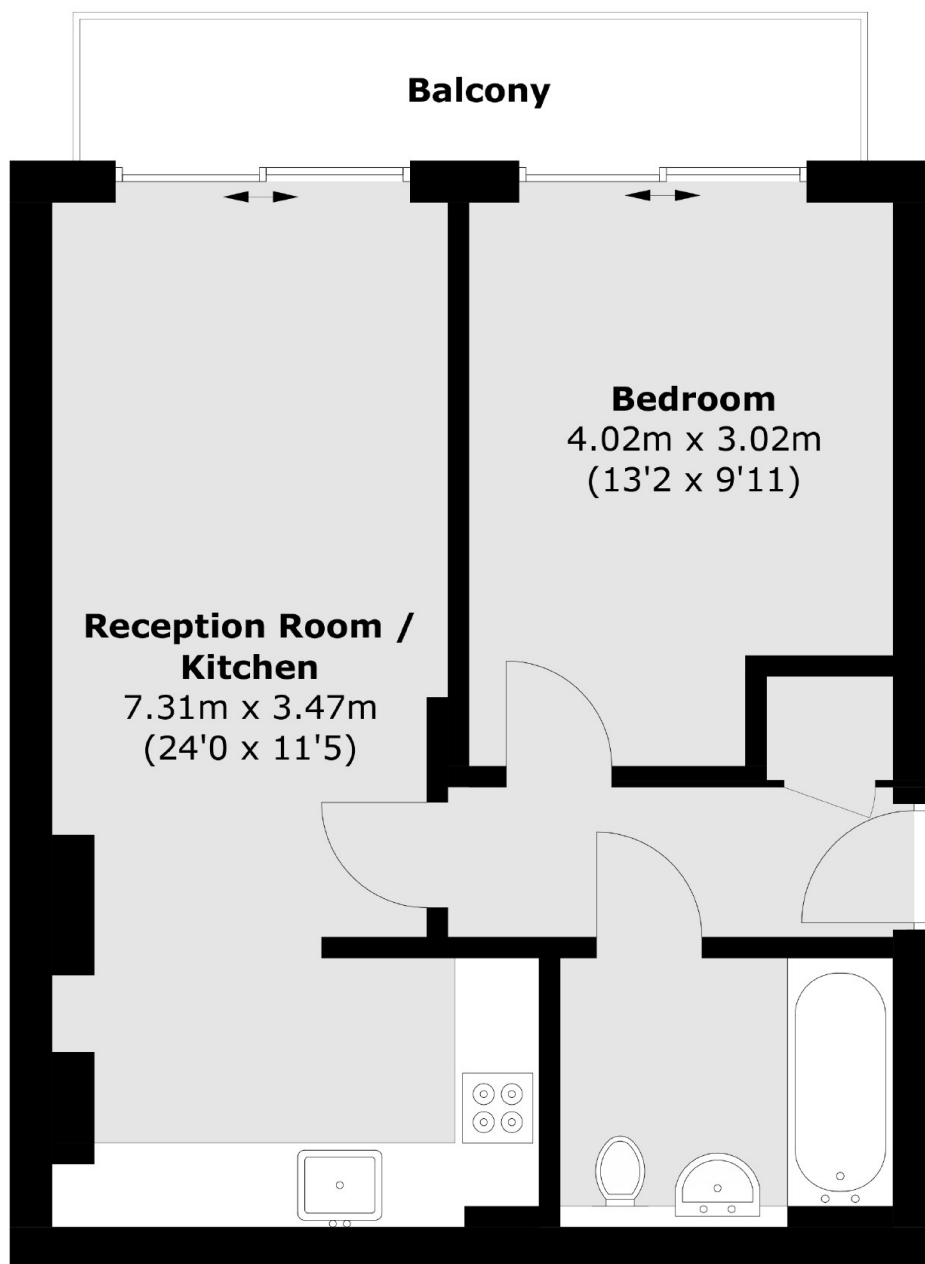
A modern one double bedroom apartment with a south east facing balcony. This apartment has been renovated throughout, with a modern open plan kitchen and living area with space to dine. This property is located within a secure purpose built block and has lift access.

Located moments away from Broadway market with its abundance of bars, cafés and restaurants leading up to London Fields. Bethnal Green tube station is less than a mile away, as well as close access to many bus routes from Hackney Road through to the City and West End.

### Features

- One Double Bedroom
- South East Facing Balcony
- Modernised
- Secure Development
- Open plan
- Broadway Market

# Goldsmiths Row, London, E2



## Third Floor

Total area (approx.): 44.5 sq. m (478.9 sq. ft)  
Balcony: 5.6 sq. m (60.2 sq. ft)

**Dexters**

Hackney  
10 Broadway Market  
London  
E8 4QJ  
Sales  
0207 247 2440

Energy Rating: B. We aim to make our particulars both accurate and reliable. However they are not guaranteed; nor do they form part of an offer or contract. If you require clarification on any points then please contact us, especially if you're traveling some distance to view. Please note that appliances and heating systems have not been tested and therefore no warranties can be given as to their good working order.

 **RICS** | Regulated  
Estate Agent  
and Letting Agent

dexters.co.uk