

Eric Street, E3

£675,000

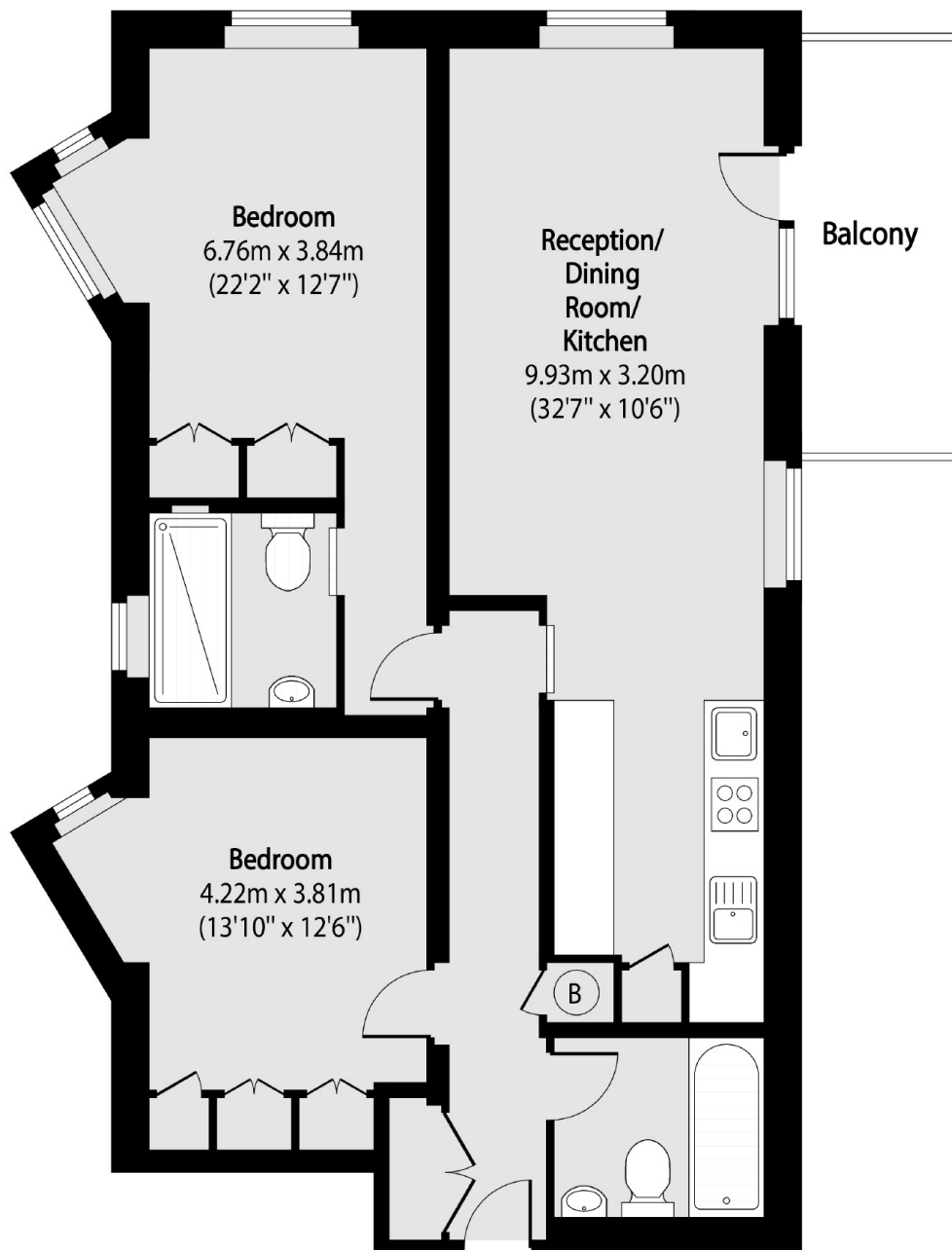
A beautiful refurbished two bedroom, two bathroom apartment within a modern gated development in the heart of Bow. The property benefits from a private balcony and is offered with no onward chain.

Located close to Mile End Station with access to the Central line, District line and Hammersmith & City. Surrounded by local cafés, restaurants and the open spaces of Victoria Park.

Features

Offers In Excess Of
No Onward Chain
Gated Development
Private Balcony
Mile End Station
Concrete Flooring Throughout
Victoria Park

Eric Street, London, E3



Total area (approx): 75.34 sq m (811 sq. ft)

Balcony total area (approx): 6.87 sq m (74 sq. ft)