



## Mostyn Grove, E3

£480,000

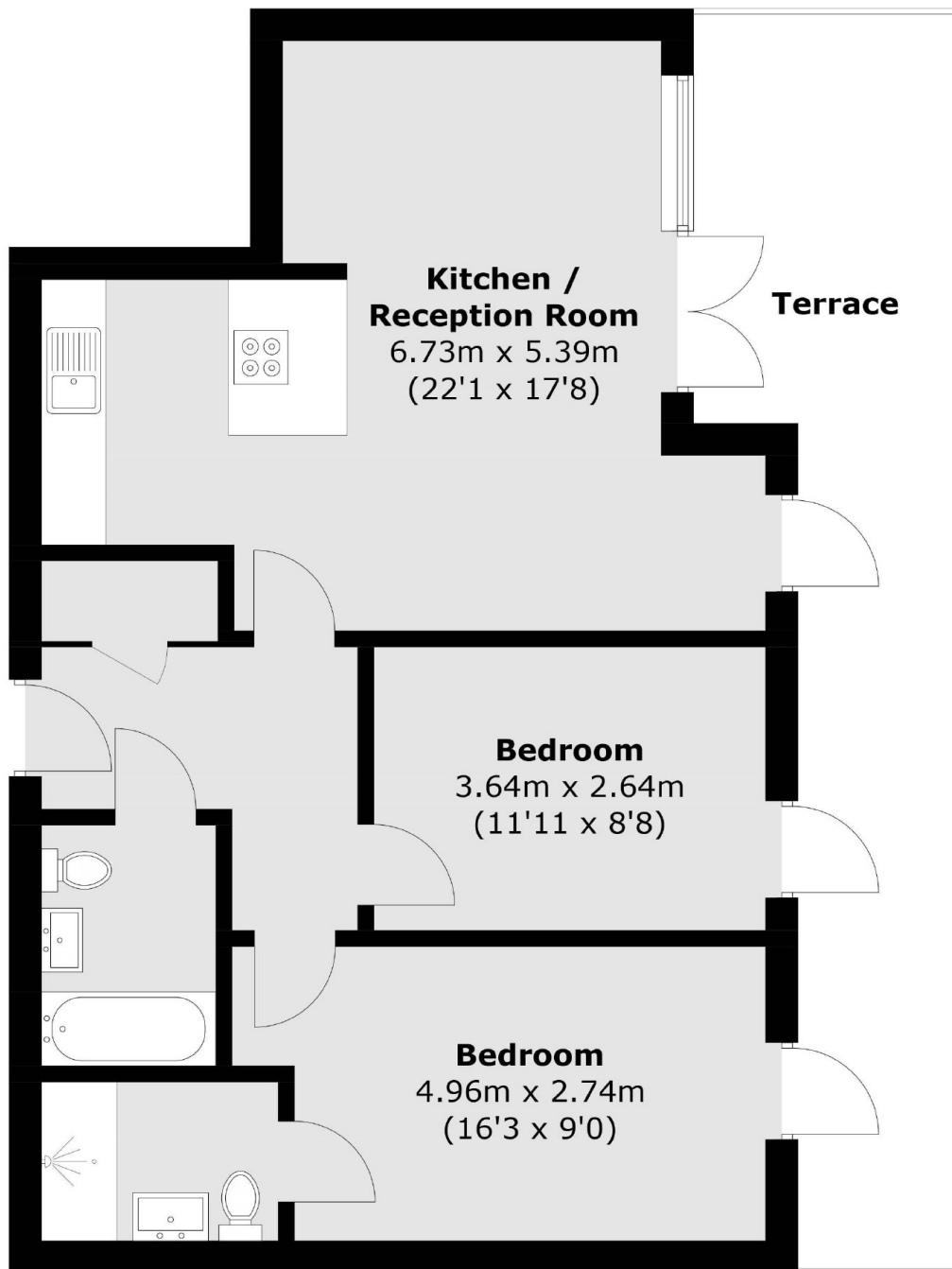
A two double bedroom top floor apartment with panoramic views from its private east facing terrace. This property offers open plan living with space to dine, has floor to ceiling windows throughout and access to the terrace from both bedrooms as well as the living area. This property is being sold chain free, there is a concierge, lift access and secure fob entry.

Ideally located under a miles walk from both Bow Road and Mile End Tube stations, making for great transport links in and around the city. Also close by to popular amenities of Bow including Roman Road Market, Victoria Park and Queen Elizabeth Park.

### Features

- Two Double Bedrooms
- Chain Free
- Modern Bathrooms
- Secure Development
- Top Floor
- Private Terrace
- Communal Gardens

# Mostyn Grove, London, E3



Total area (approx.): 67.2 sq. m (723.3 sq. ft)  
Terrace area : 21.2 sq. m (228.2 sq. ft)

**Dexters**

Hackney  
10 Broadway Market  
London  
E8 4QJ  
Sales  
0207 247 2440

Energy Rating: C. We aim to make our particulars both accurate and reliable. However they are not guaranteed; nor do they form part of an offer or contract. If you require clarification on any points then please contact us, especially if you're traveling some distance to view. Please note that appliances and heating systems have not been tested and therefore no warranties can be given as to their good working order.

 **RICS** | Regulated  
Estate Agent  
and Letting Agent

dexters.co.uk