



**Lauriston Road, E9**

**£1,795,000**

**Dexters**





## Lauriston Road, E9

A five storey Georgian end of terrace freehold house with a well manicured south facing garden. This house overlooks St John of Jerusalem Church. This property offers over 1980Sqft of original features and period charm.

As you enter at raised ground level through the immaculate front garden, to the right there is a grand living space with double height ceilings, sash windows with original shutters, ornate cornicing, wooden floorboards and decorative fireplace.

On the lower ground level there is a generous kitchen with an Island, ample space to dine or entertain and stable door out into the beautiful garden.

On the first floor there is the principle bedroom with wooden flooring, sash windows, double height ceilings and an en suit bathroom. On the second floor there is also a dedicated dressing room which is big enough to be a bedroom is needed. There is a third bedroom on this level too.

The top floor has a further multifunctional space with eaves storage, velux windows and views of the city skyline.

Located in the heart of Victoria Park Village opposite the picturesque Church Yard this property has an abundance of popular eateries, cafes and bars within 200 yards. There are excellent bus routes to the city and central London with the nearest tube under half a mile walk at Homerton Overground.

### Features

Georgian  
End Of Terrace  
Freehold  
Five Storey  
City Views  
Period Features







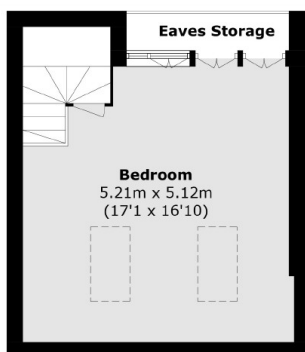




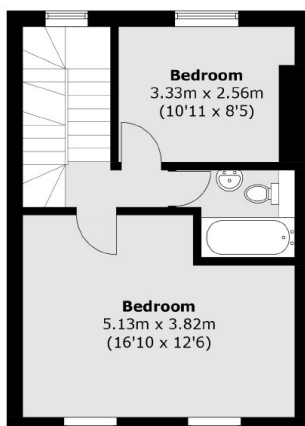




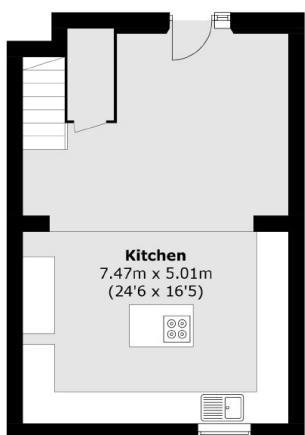
# Lauriston Road, London, E9



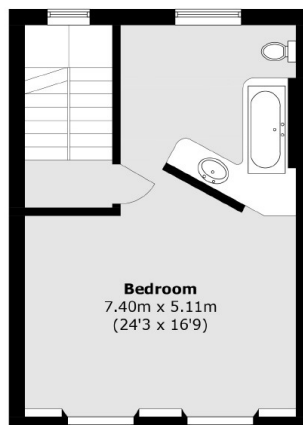
**Third Floor**



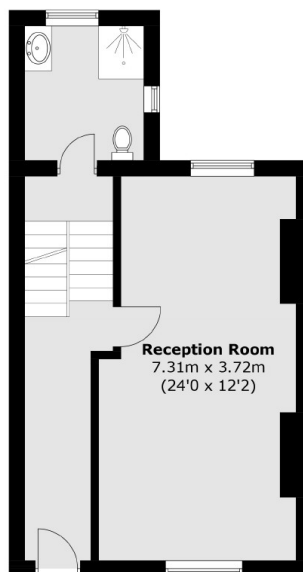
**Second Floor**



**Lower Ground Floor**



**First Floor**



**Ground Floor**

Total area (approx.): 184.0 sq. m (1,980.5 sq. ft)  
(Excluding Eaves)