



## Whiston Road, E2

£400,000

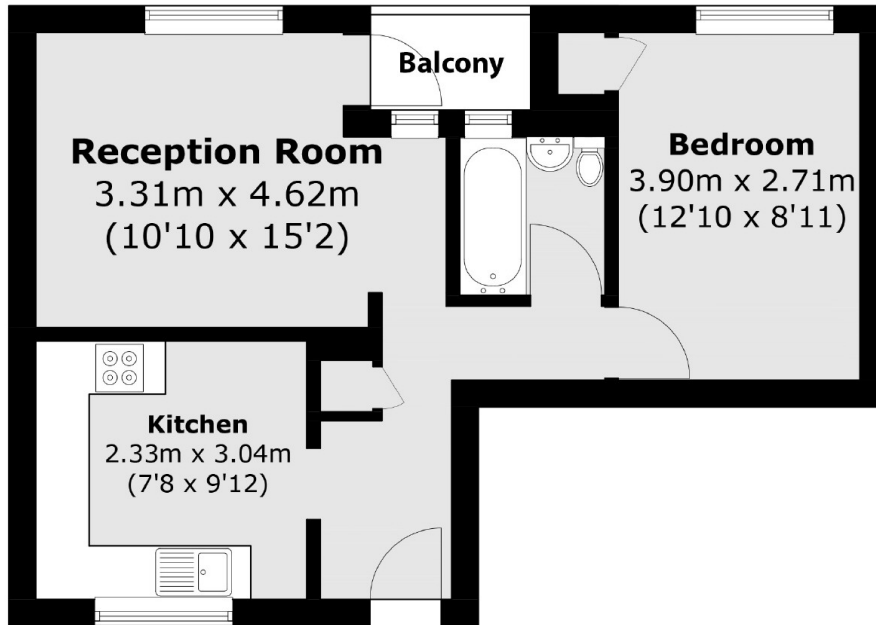
A one bedroom apartment located on the seventh floor of a purpose build block with panoramic city skyline views. This property is located within a secure building with lift access, has been decorate throughout with cork flooring and modernised kitchen and bathroom. This property benefits from a south facing private balcony, separate kitchen/ living area and measures in excess of 480 sqft.

There are an abundance of bars, cafés and restaurants leading up to London Fields at the end of Broadway Market, with London Fields Station less than half a mile away and access to many bus routes, to the City and West End.

### Features

- City Views
- Balcony
- Separate Kitchen
- Secure Building
- Lift Access
- Modernised

# Whiston Road, London, E2



Total area (approx.): 44.6 sq. m (480.0 sq. ft)

Balcony area (approx.): 1.9 sq. m (20.4 sq. ft)