

Gibbs Lane, E2

£500,000

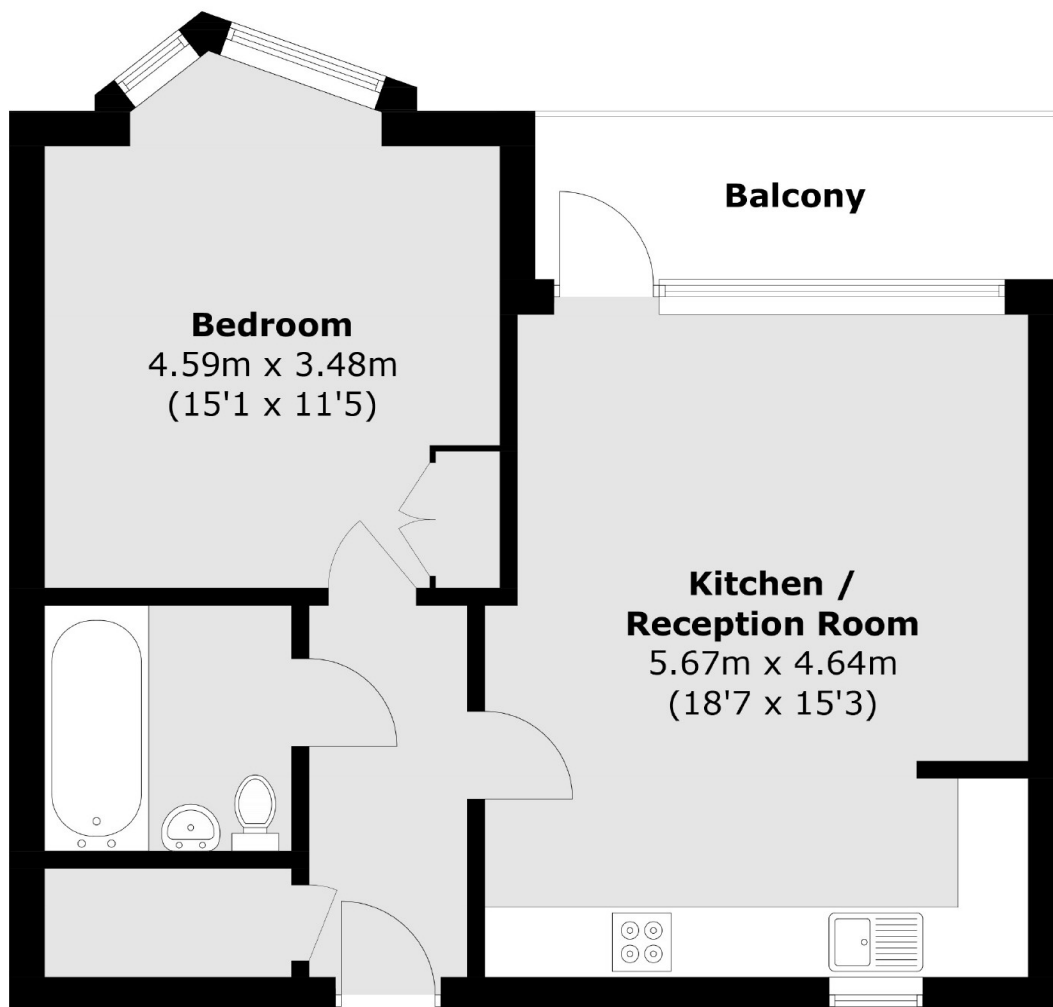
A modern one double bedroom apartment measuring in excess of 585 square feet located within a secure block and a quiet pedestrianised road. This property offers open plan living with ample space for dining and entertaining, has a private balcony and engineered wooden flooring throughout the living space and hallway. This property is being offered chain free.

Goldsmiths Row leads directly into the popular Broadway Market and Columbia road, with Hackney City farm adjacent and regants canal nearby. The property is located perfectly near local amenities and transport links to the City.

Features

- One Double Bedroom
- Modern
- Secure Development
- Balcony
- Open Plan
- Utility Room
- Chain Free

Gibbs Lane, London, E2



Total area (approx.): 54.7 sq. m (588.8 sq. ft)
Balcony area: 6.2 sq. m (66.7 sq. ft)