

Lee Street, E8

£575,000

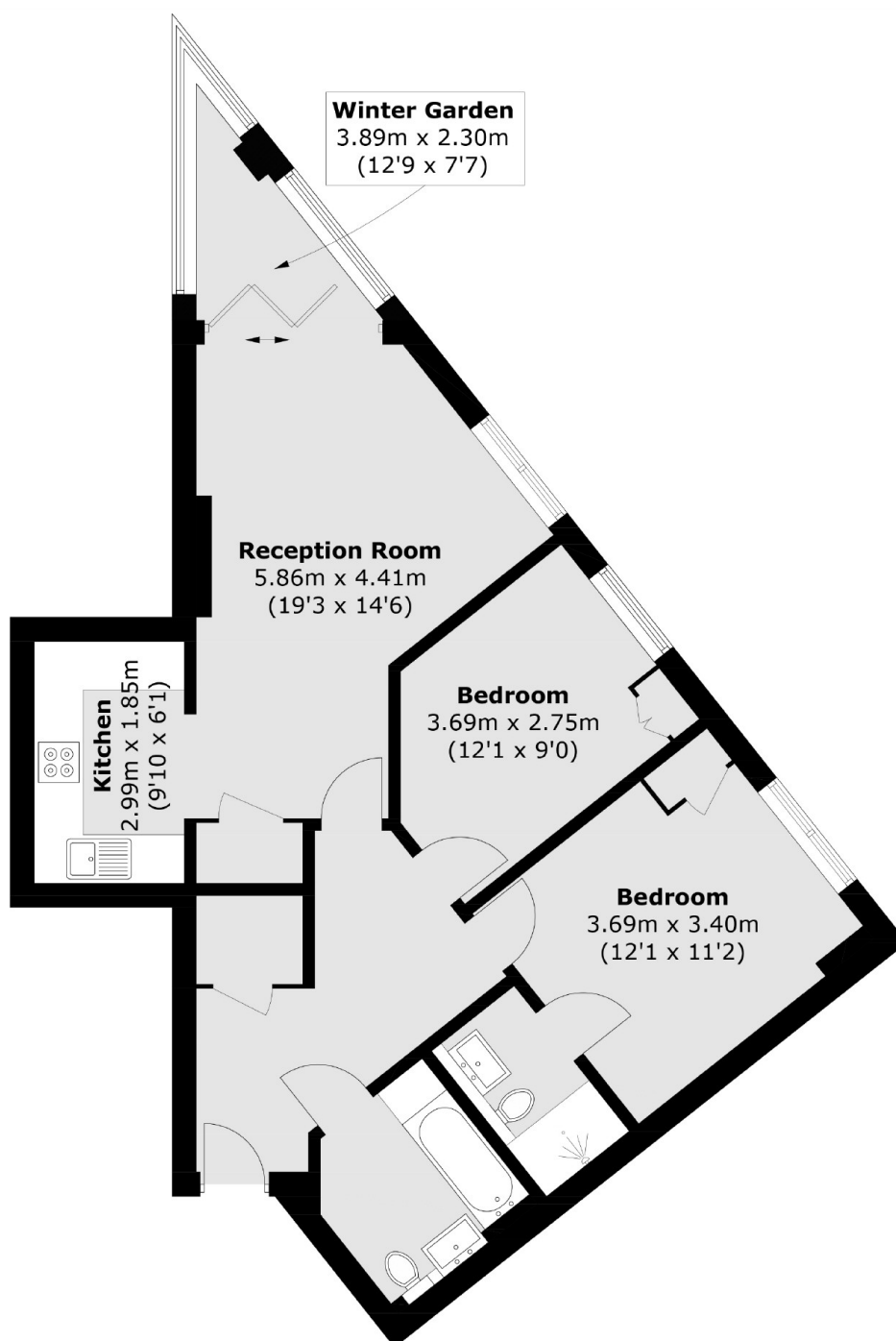
A bright two double bedroom, two bathroom flat in City Mill Apartments. This property has large floor to ceiling windows letting in an abundance of natural light and an open plan living kitchen and private winter garden / balcony with views over Stonebridge Gardens. Also benefiting from bike storage, concierge.

City Mills is within walking distance to Shoreditch, Liverpool Street, Dalston, London Fields, Broadway Market and Victoria Park as well as the ever popular Columbia Road, Brick Lane and Regents Canal. Haggerston Overground station is under 150 metres away and provides quick and easy access to the City and West End. Bus routes into the City and Shoreditch are also nearby.

Features

Offers In Excess Of
Chain Free
Private Winter Garden/
Balcony
Communal Garden
Secure Bike Storage
Park Views
Concierge
EWS1 Form

Lee Street, London, E8



Total area (approx.): 72.1 sq. m (776.0 sq. ft)

Dexters

Hackney
10 Broadway Market
London
E8 4QJ
Sales
0207 247 2440

Energy Rating: B. We aim to make our particulars both accurate and reliable. However they are not guaranteed; nor do they form part of an offer or contract. If you require clarification on any points then please contact us, especially if you're traveling some distance to view. Please note that appliances and heating systems have not been tested and therefore no warranties can be given as to their good working order.

 **RICS** | Regulated
Estate Agent
and Letting Agent

[dexters.co.uk](https://www.dexters.co.uk)