

## Lee Street, E8

£575,000

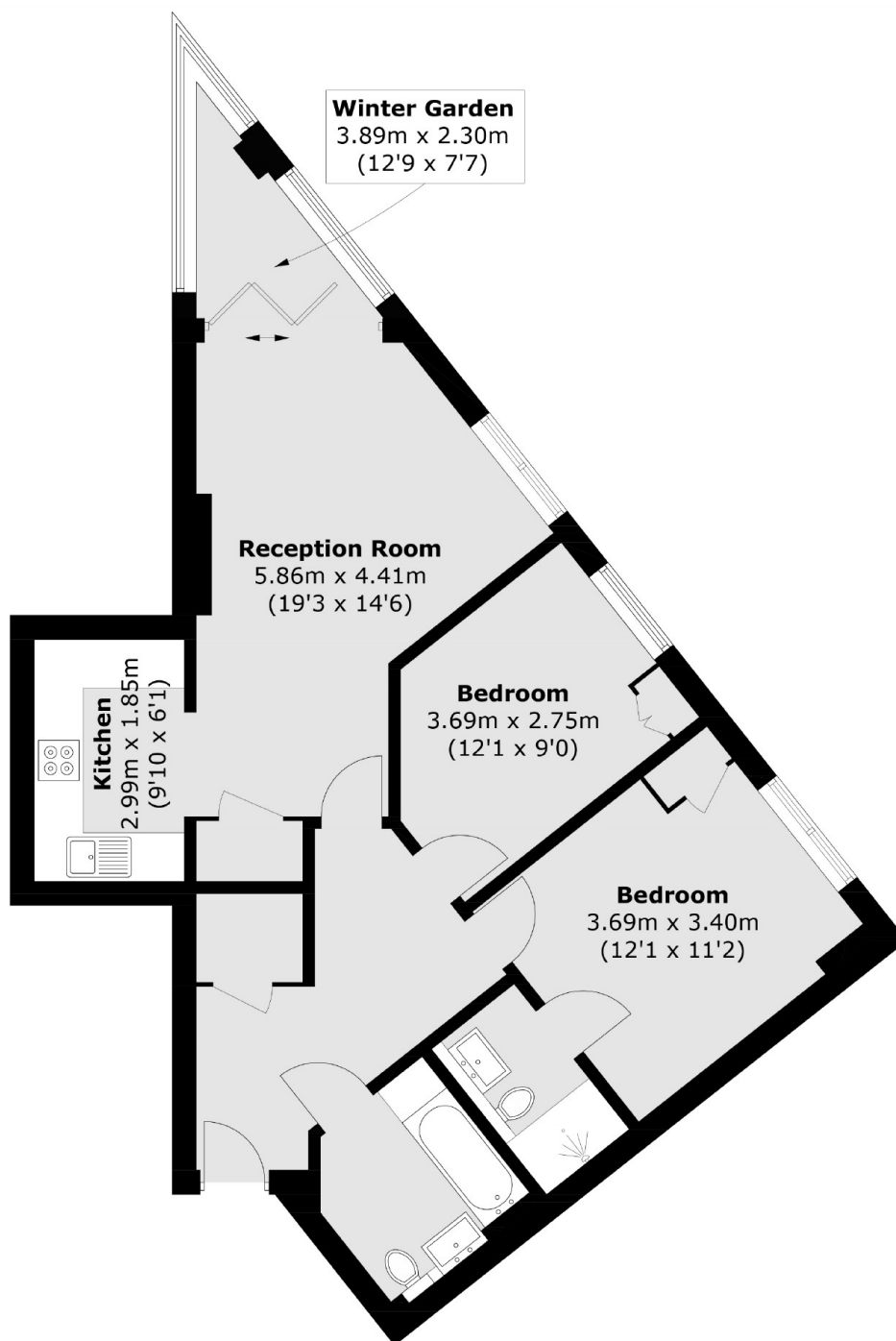
A bright two double bedroom, two bathroom flat in City Mill Apartments. This property has large floor to ceiling windows letting in an abundance of natural light and an open plan living kitchen and private winter garden / balcony with views over Stonebridge Gardens. Also benefiting from bike storage, concierge.

City Mills is within walking distance to Shoreditch, Liverpool Street, Dalston, London Fields, Broadway Market and Victoria Park as well as the ever popular Columbia Road, Brick Lane and Regents Canal. Haggerston Overground station is under 150 metres away and provides quick and easy access to the City and West End. Bus routes into the City and Shoreditch are also nearby.

### Features

Offers In Excess Of  
Chain Free  
Private Winter Garden/  
Balcony  
Communal Garden  
Secure Bike Storage  
Park Views  
Concierge  
EWS1 Form

# Lee Street, London, E8



Total area (approx.): 72.1 sq. m (776.0 sq. ft)