



Wharf Place, E2

£600,000

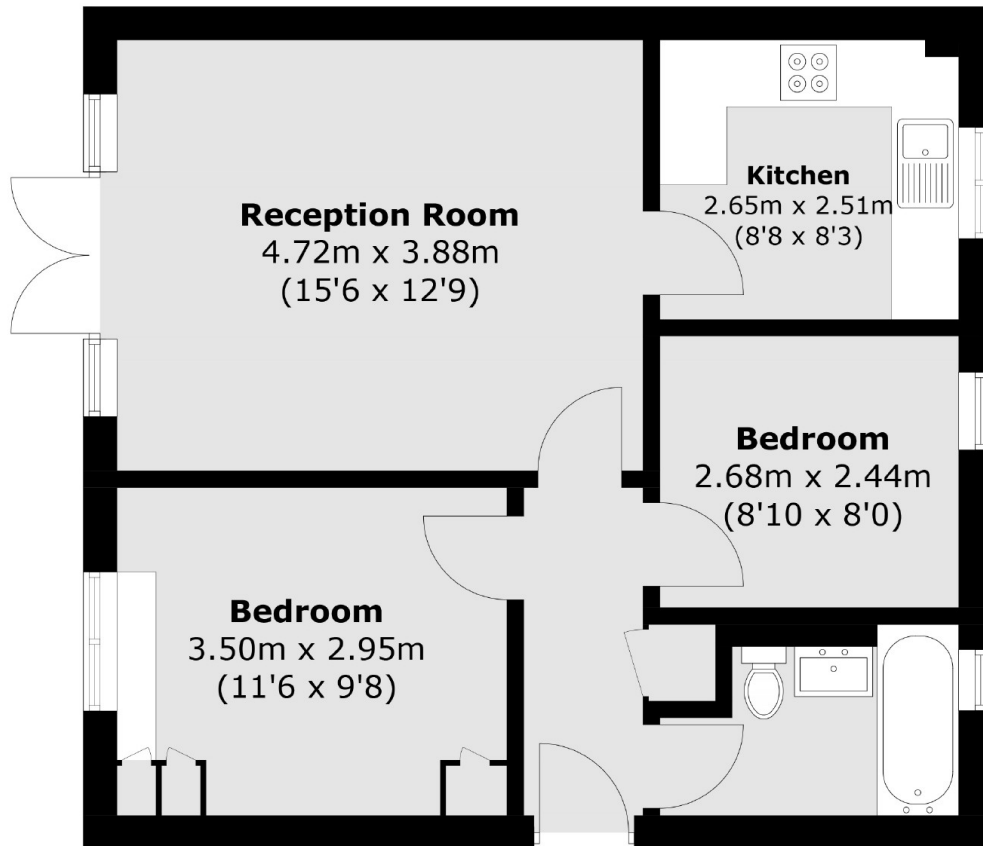
A two double bedroom apartment on Regents Canal. The property benefits from separate kitchen and living area. With windows and doors facing the canal and access to communal terrace gardens with views of the popular Broadway Market. The property also benefits from secure underground parking.

Located at the bottom of Broadway Market, right on the Canal with an abundance of local amenities and London Fields Park nearby. Also ideally located a short walk away from Bethnal Green underground and London Fields Overground.

Features

Offers In Excess Of
Two Double Bedrooms
Regents Canal
Communal Gardens
Underground Parking
Broadway Market
Columbia Road Flower Market

Wharf Place, London, E2



Total area (approx.): 52.9 sq. m (569.4 sq. ft)