



## Stephan Close, E8

£775,000

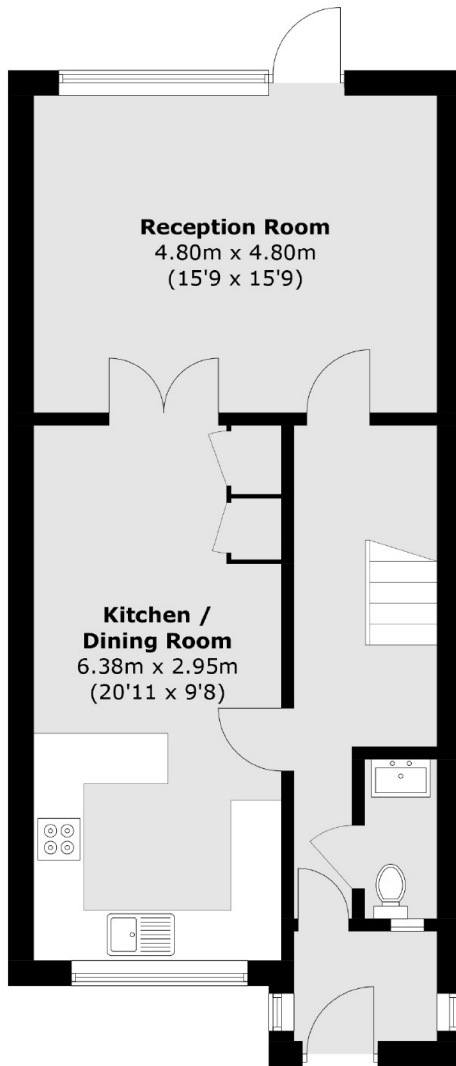
A four bedroom two storey freehold house located down a quiet cul de sac close to Broadway Market. This property has an open plan living and kitchen area with ample space to dine, a west facing rear garden and east facing front garden. This property is being offered chain free.

Located 100 yards from Broadway Market, this property has an abundance of shops, restaurants and cafés close by. The open green space of London Fields is 300 yards away with Haggerston Station half a mile walk and Bethnal Green station just under a mile walk on the Central Line.

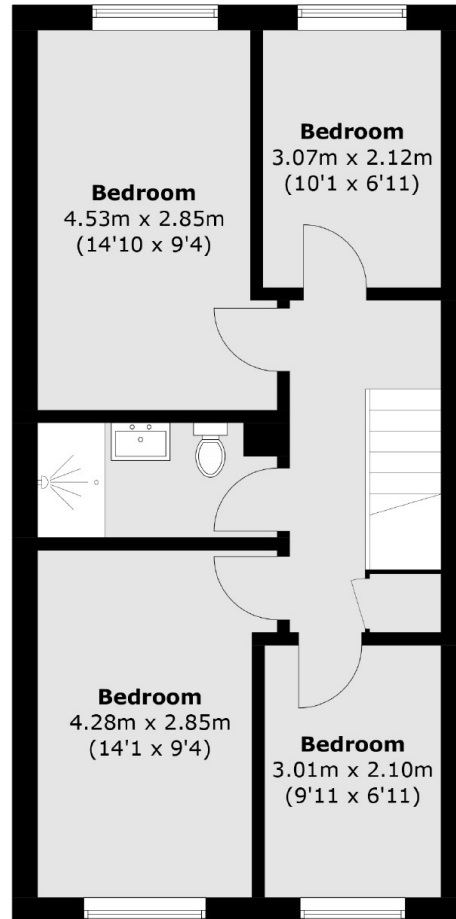
### Features

- Freehold
- Four Bedrooms
- Front and Rear Garden
- Open Plan Living
- Chain Free

# Stephan Close, London, E8



**Ground Floor**



**First Floor**

Total area (approx.): 101.0 sq. m (1,087.2 sq. ft)