



## Fern Street, E3

### £325,000

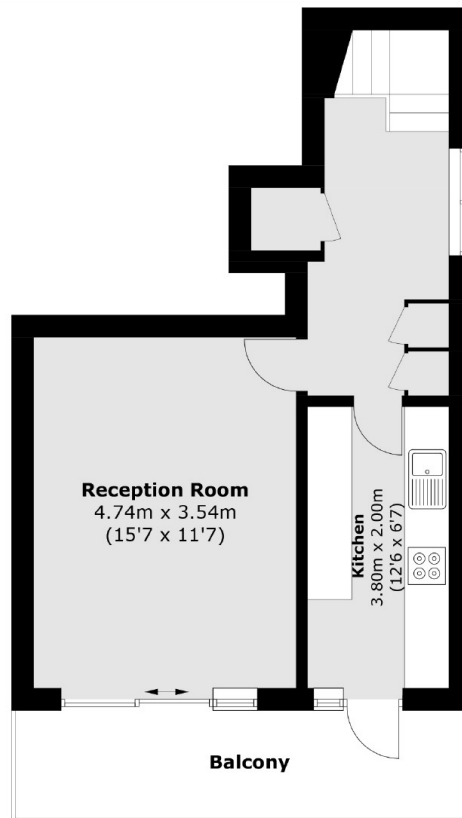
A split level two bedroom apartment with a south facing private balcony with unobstructed Canary Wharf. This apartment measures in excess of 700 square foot, has a separate eat in kitchen, generous storage and lift access.

The property is ideally located close to Bow Road Underground Station with good access to the City, Stratford Station and the Queen Elizabeth Olympic Park. Devons Road Station on the DLR is also close by. There is also easy access to both Canary Wharf, Hackney and Victoria Park. Nearby ample green spaces such as Mile End and Tower Hamlets Park.

### Features

Offers In Excess Of  
Duplex  
Two Bedrooms  
Private Balcony  
South Facing  
Local Parks  
Tube and DLR

# Fern Street, London, E3



**Fourteenth Floor**



**Thirteenth Floor**

Total area (approx.): 66.2 sq. m (712.6 sq. ft)  
Balcony area (approx.): 8.9 sq. m (95.8 sq. ft)