



## Frampton Park Road, E9

### £450,000

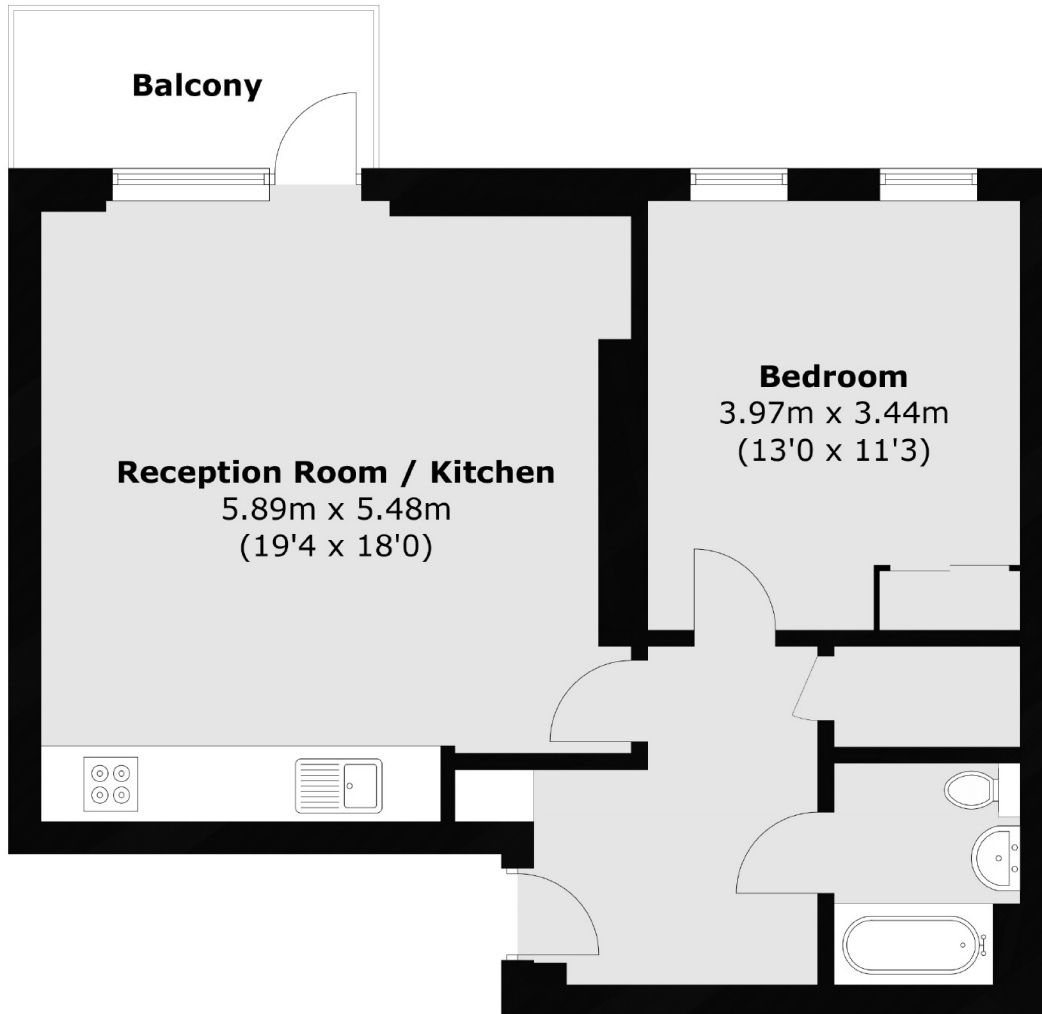
A well presented one double bedroom, first floor apartment, measuring in excess of 630sqft of lateral living space. The property has a bright open plan kitchen/ reception area, leading out onto a generous private balcony through floor to ceiling doors, and also benefits from a communal roof terrace, secure bike storage and ample storage.

Ideally located nearby the endless amenities and green spaces of London Fields and Broadway Market. The property also offer great transport links in and around The City with London Fields Overground Station less than half a mile walk away.

### Features

- Offers In Excess Of
- One Double Bedroom
- Private Balcony
- Open Plan
- Communal Roof Terrace
- London Fields
- Broadway Market

# Frampton Park Road, London, E9



Total area (approx.): 58.9 sq. m (634.0 sq. ft)  
Balcony area (approx.): 4.8 sq. m (51.7 sq. ft)