



Tudor Road, E9

£680 Per calendar month

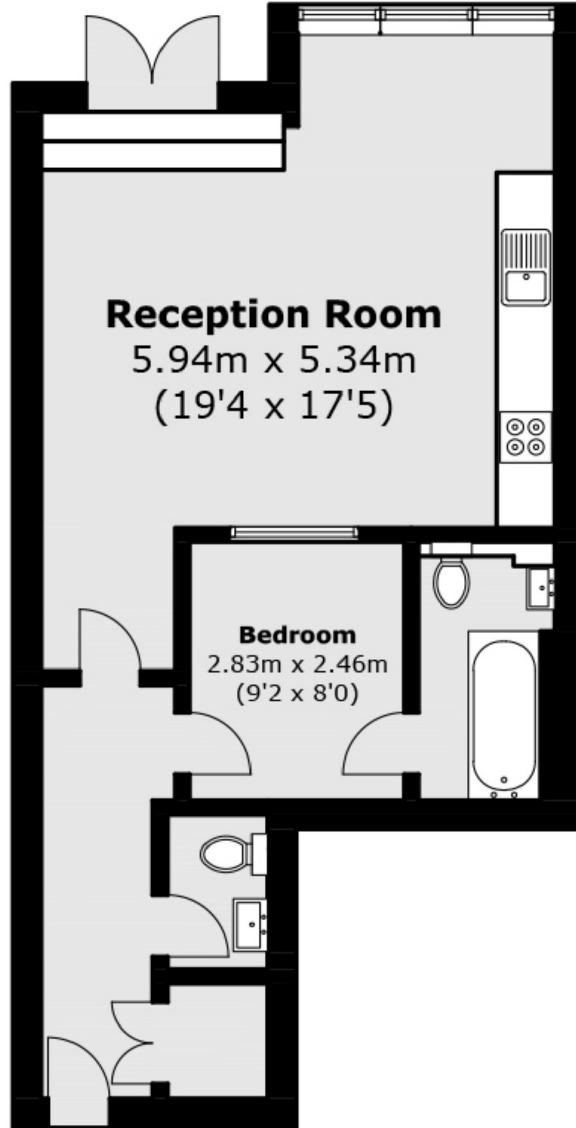
One double bedroom warehouse apartment in the heart of Hackney. This apartment has an open plan reception with high ceilings, wooden flooring throughout, exposed brick and original features throughout which comes furnished.

Situated between the greens of Victoria Park and London Fields which leads onto Broadway Market with its many pubs, restaurants and cafes. London Fields overground station is a short walk away for easy access to the City.

Features

- One Double Bedroom
- Warehouse Conversion
- Exposed Brickwork
- Open Plan
- High Ceilings
- Original Features

Tudor Road, London, E9



Total area (approx.): 47.73 sq. m (156.59 sq. ft)