



King Edward's Road, E9

£600 Per week

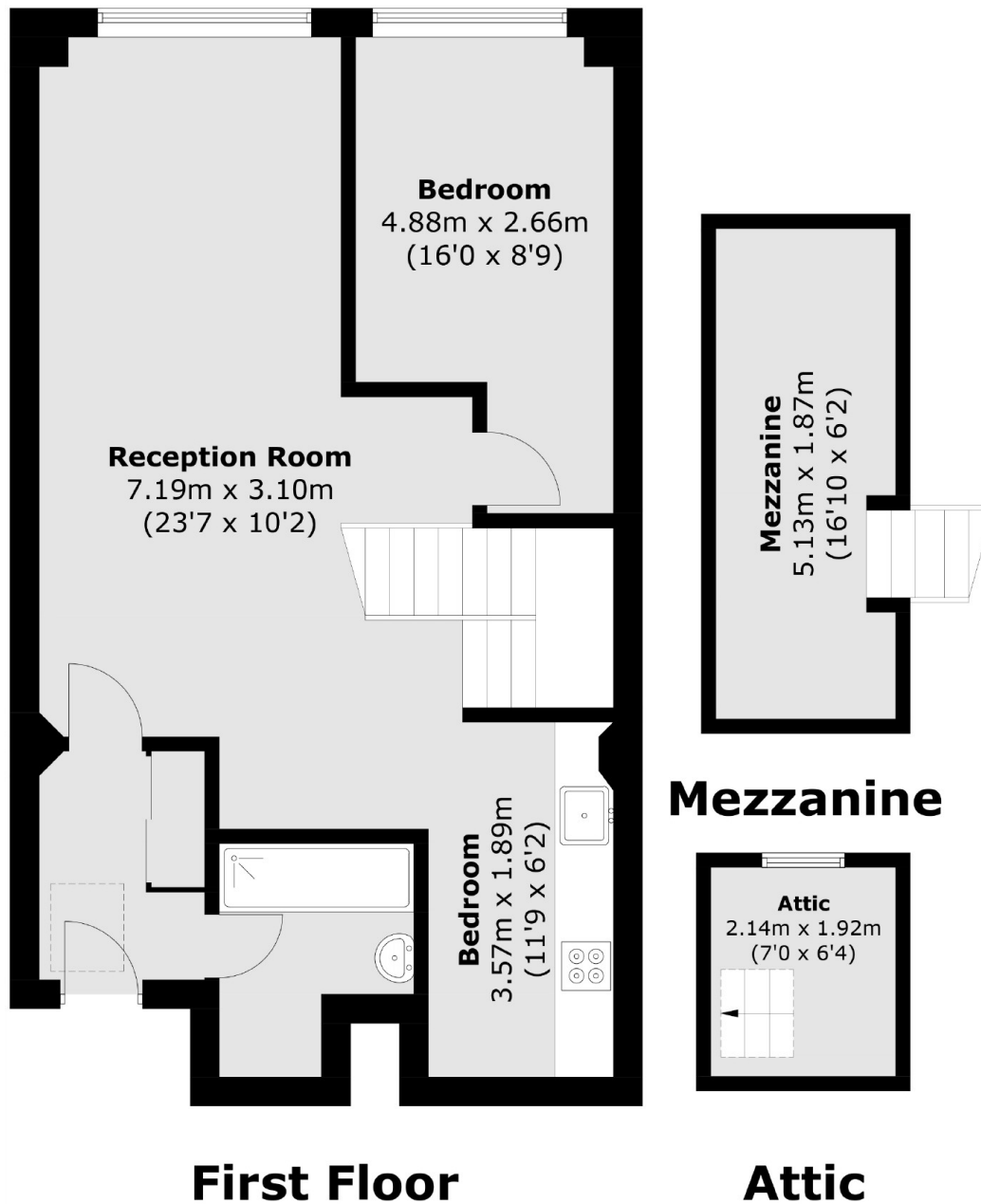
A beautifully presented converted warehouse apartment on the ever popular King Edward's Road development. This unique property has open plan living space, mezzanine office/study Area, high ceilings also abundance of natural light.

Perfect location just off Mare Street within easy reach of London Fields, Broadway Market and Victoria Park Village, close to all local shops, cafés and restaurants.

Features

- One Double Bedroom
- Warehouse Conversion
- Recently Renovated
- Furnished
- Mezzanine Office/Study
- High Ceilings

King Edward's Road, London, E9



Total area (approx.): 60.5 sq. m (651.2 sq. ft)
Mezzanine / Attic (approx.): 14.2 sq. m (152.8 sq. ft)